



Gulfstream American

SERVICE BULLETIN NO. 169

DATE: March 18, 1980

SUBJECT: OUTBOARD ELEVATOR DRAIN HOLES

SERIALS AFFECTED: AA5A-0001 through AA5A-0896 and AA5B-0001 through AA5B-1310

TIME COMPLIANCE: The next one hundred (100) hour inspection or annual inspection, whichever comes first.

### GENERAL

There have been reports of some AA5A and AA5B aircraft having water collecting in the trailing edge of the elevators. This Service Bulletin calls for the inspection of the outboard elevator drain holes and the addition of new drain holes, if necessary.

### INSPECTION/REWORK

During the next one hundred (100) hour inspection or annual inspection, whichever comes first, visually inspect the two elevator outboard drain holes. If the drain holes are more than 1.5 inches from the trailing edge, add .32 dia. holes at 1.5 inches forward of the trailing edge. See Figure 1.

A minimum center-to-center distance of .75 is to be maintained between existing and new holes. New holes may be offset to arrive at the .75 minimum dimension. New holes are to be located as close as possible to Station 53.72 and 63.56. See Figure 1.

### CAUTION

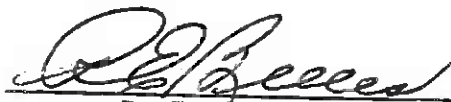
CARE SHOULD BE EXERCISED TO PREVENT THE DRILL BIT FROM CONTACTING/DAMAGING THE INSIDE OF THE UPPER SKIN.

CREDIT INFORMATION

No labor allowance is available for the inspection, however, a labor allowance of 1.0 hour at the Gulfstream American Service Center's Prevailing shop rate will be available for each affected aircraft within warranty, as of the date of this Service Bulletin. No labor credit will be available for aircraft beyond the warranty period.

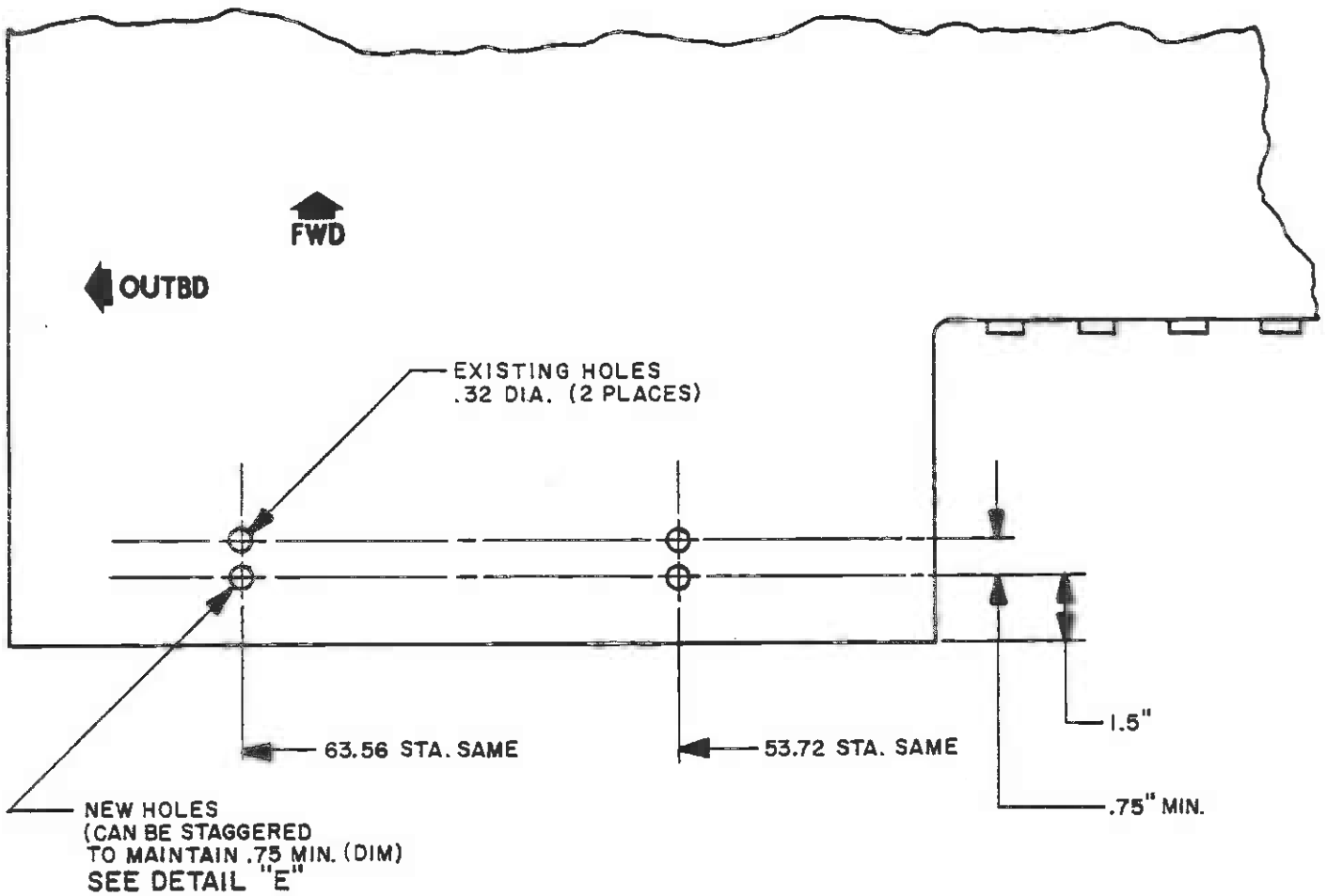
All work must be performed or authorized by a Gulfstream American Service Center. A completed Warranty Claim Form GAA 740 must be submitted to the factory for credit allowance prior to August 1, 1980.

GULFSTREAM AMERICAN CORPORATION



R. E. Belles, Director  
Light Aircraft Customer Service

REB/canb



VIEW LOOKING UP AT BOTTOM OF R.H. ELEVATOR.  
 L.H. ELEVATOR OPPOSITE.

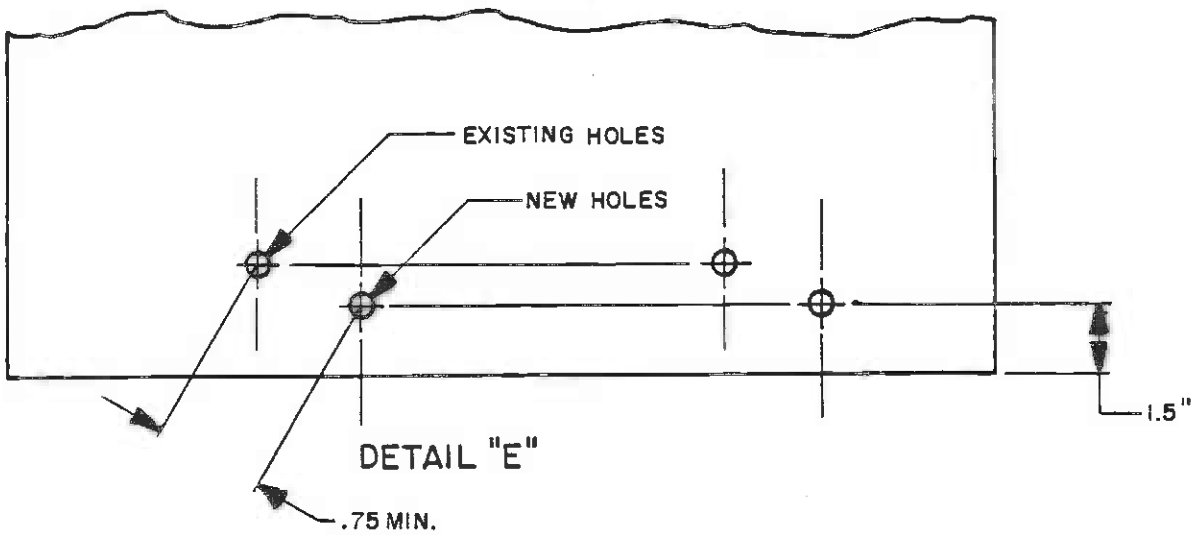


Figure 1