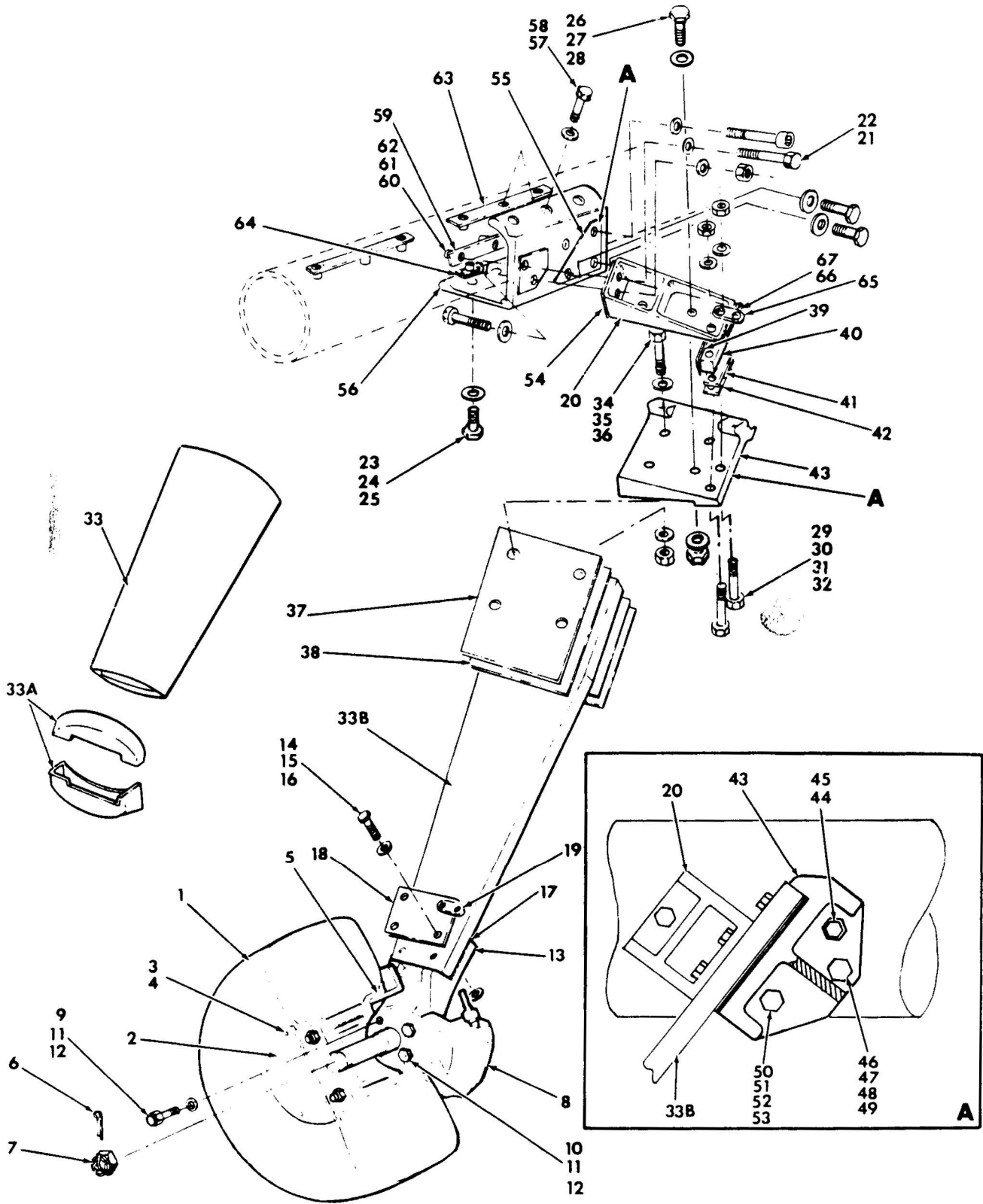


AA-5 SERIES
ILLUSTRATED PARTS CATALOG

CHAPTER 32
LANDING GEAR
TABLE OF CONTENTS

SUBJECT	FIGURE NUMBER
MAIN LANDING GEAR INSTALLATION	32-1
MAIN LANDING GEAR WHEEL AND BRAKE ASSEMBLY	32-2
MAIN LANDING GEAR WHEEL AND BRAKE ASSEMBLY (ALT.)	32-3
NOSE LANDING GEAR ASSEMBLY AND INSTALLATION	32-4
NOSE LANDING GEAR WHEEL AND TIRE ASSEMBLY	32-5
NOSE LANDING GEAR WHEEL AND TIRE ASSEMBLY	32-6
MAIN LANDING GEAR FAIRING INSTALLATION (OPTIONAL)	32-7
NOSE WHEEL FAIRING ASSEMBLY AND INSTALLATION (OPTIONAL)	32-8
NOSE LANDING GEAR STRUT FAIRING INSTALLATION	32-9
BRAKE SYSTEM INSTALLATION (1977 MODELS)	32-10 R
BRAKE SYSTEM INSTALLATION (1978 MODELS)	32-11 R
PARKING BRAKE INSTALLATION (1977 MODELS)	32-12 R
MASTER CYLINDER	32-13
MASTER CYLINDER ASSEMBLY	32-14

AA-5 SERIES
ILLUSTRATED PARTS CATALOG



Main Landing Gear Installation
Figure 32-1

32G54-1

AA-5 SERIES
ILLUSTRATED PARTS CATALOG

Figure & Index No.	Part Number	Nomenclature	Units Per Assy	Usable On Code
32- 1 -	5701070-501	MAIN LANDING GEAR INSTALLATION (LH)	NP	A
	5701070-502	MAIN LANDING GEAR INSTALLATION (RH)	NP	B
	5701070-503	MAIN LANDING GEAR INSTALLATION (LH)	NP	B
	5701070-504	MAIN LANDING GEAR INSTALLATION (RH)	NP	B
- 1	6.00-6 TYPE II	TIRE, 4-PLY, TUBE TYPE	1	A
	6.00-6 TYPE II	TIRE, 6-PLY, TUBE TYPE	1	B
	6.00-6	TUBE	1	
- 2	701007-1	FAIRING, WHEEL	1	
		(ATTACHING PARTS)		
- 3	NAS220-4	SCREW	3	
- 4	AN936A8	WASHER	3	
		(ATTACHING PARTS)		
- 5	040-088C	WHEEL ASSY (V71513) (SEE FIGURE 32-2 FOR DETAIL BREAKDOWN.)	REF	
	D30063	WHEEL ASSY (V76275) (SEE FIGURE 32-3 FOR DETAIL BREAKDOWN.)	REF	
		(ATTACHING PARTS)		
- 6	AN380-4-8	COTTER PIN	1	
- 7	AN7502-24	NUT	1	
		(ATTACHING PARTS)		
- 8	030-056B	BRAKE ASSY (V71513) (SEE FIGURE 32-2 FOR DETAIL BREAKDOWN.)	REF	
		NOTE: WHEEL ASSEMBLIES AND BRAKE ASSEMBLIES BY DIFFERENT MANUFACTURERS ARE NOT COMPATIBLE. ORDER LIKE ITEMS ONLY.		
	C-30018	BRAKE ASSEMBLY (V76275) (SEE FIGURE 32-3 FOR DETAIL BREAKDOWN.)	REF	
		(ATTACHING PARTS)		
- 9	AN6-16A	BOLT (UPPER)	1	
-10	AN6-14A	BOLT (LOWER)	1	
-11	AN960-616	WASHER	4	
-12	MS20365-624	NUT	2	
		(ATTACHING PARTS)		
-13	701042-1	AXLE	1	
		(ATTACHING PARTS)		
-14	AN6-22A	BOLT	4	
		NOTE: IF 701068 SHIM IS USED, TWO AN6-23A BOLTS WILL REPLACE AN6-22A BOLTS AT THICK EDGE OF SHIM.		
	AN6-23A	BOLT	AR	
-15	AN960-616	WASHER	4	
-16	MS20365-624	NUT	4	
-17	701068-1	SHIM	AR	
	THROUGH 701068-3			
		(ATTACHING PARTS)		
-18	701017-1	REINFORCEMENT PLATE	1	
-19	403012-2	BRACKET	1	
-20	5701064-1	BRACKET (LH ONLY)	1	
	5701064-2	BRACKET (RH ONLY)	1	
		(ATTACHING PARTS)		
-21	AN8-16A	BOLT	1	
-22	AN960-816	WASHER	1	
-23	AN8-13A	BOLT	1	
-24	AN960-816	WASHER	1	
-25	MS20365-820	NUT	1	
-26	AN6-23A	BOLT	2	
-27	AN960-616	WASHER	4	
-28	MS20365-624	NUT	2	
-29	NAS146-40	BOLT	2	
-30	MS2002C6	WASHER (UNDER HEAD)	2	
-31	AN960-616	WASHER (UNDER NUT)	2	
-32	MS20365-624	NUT	2	
		(ATTACHING PARTS)		
-33	5701050-5	FAIRING	1	
-33A	5701050-6	CAP-HALF	1	
	5701050-7	CAP-HALF	1	

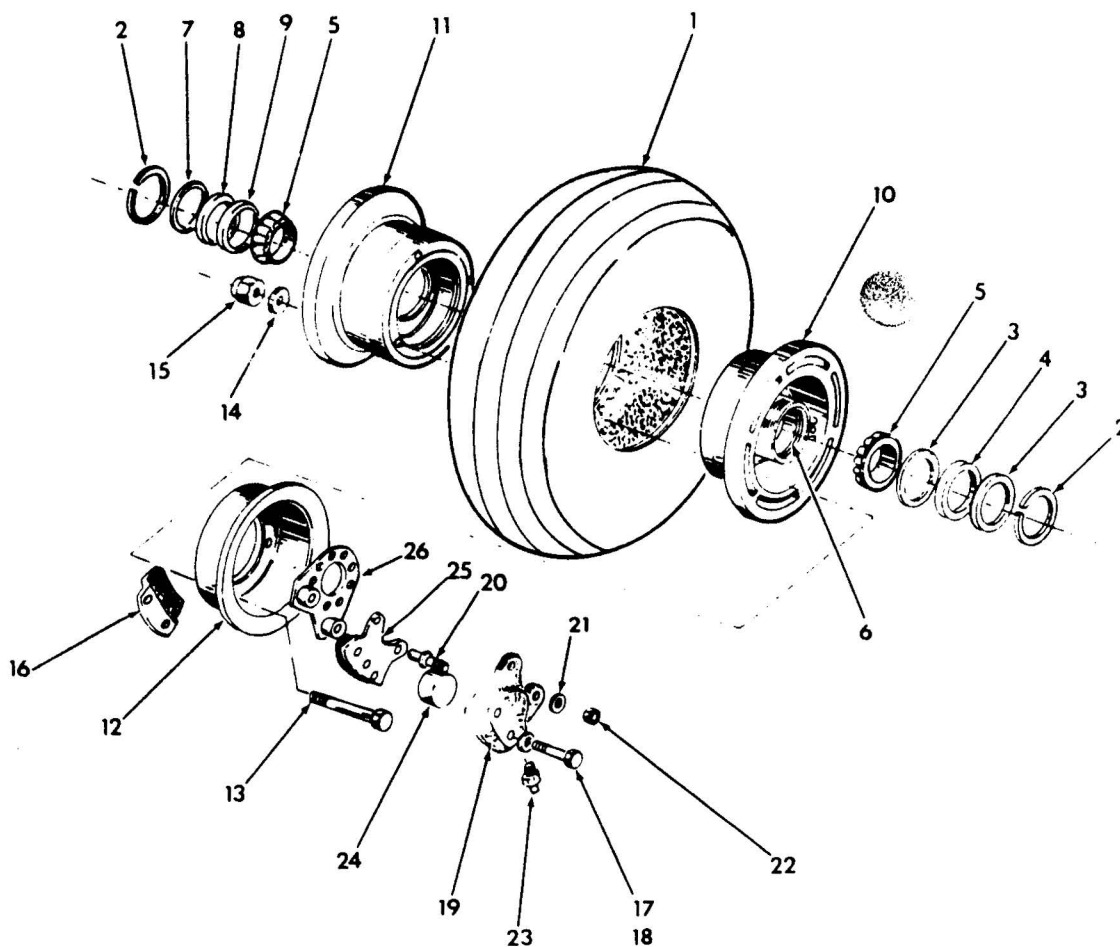
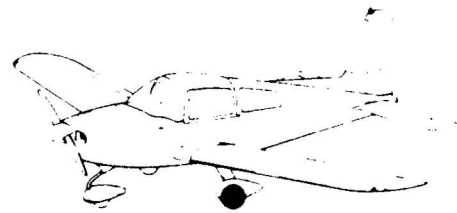
R
R
R

AA-5 SERIES
ILLUSTRATED PARTS CATALOG

Figure & Index No.	Part Number	Nomenclature							Units Per Assy	Usable On Code
		1	2	3	4	5	6	7		
32- 1	-33B	571055-1	STRUT						1	
			(ATTACHING PARTS)							
	-34	AN6-20A	BOLT						2	
	-35	AN960-616	WASHER						8	
	-36	MS20365-624	NUT						2	
	-37	5701056-1	SPRING						1	
	-38	5701056-2	SHIM						1	
	-39	5701070-2	SHIM						AR	
	-40	701067-1	SPACER						1	
	-41	5701056-3	SHIM						1	
	-42	701061-1	SHIM						AR	
		THROUGH								
		701061-5								
	-43	5701065-1	BRACKET (LH ONLY)						1	
		5701065-2	BRACKET (RH ONLY)						1	
			(ATTACHING PARTS)							
	-44	NAS148-28	BOLT						1	
		NAS148-29	BOLT						1	
	-45	MS20002C8	WASHER						1	
	-46	AN6-12A	BOLT						1	
	-47	AN960-616L	WASHER (UNDER HEAD)						1	
	-48	AN960-616	WASHER (UNDER NUT)						1	
	-49	MS20365-624	NUT						1	
	-50	AN6-13A	BOLT						1	
	-51	AN960-616L	WASHER (UNDER HEAD)						1	
	-52	5701070-4	SPACER (UNDER NUT)						1	
	-53	MS20365-624	NUT						1	
	-54	701070-2	SHIM						AR	
	-55	701070-3	SHIM						AR	
	-56	701063-503	BRACKET ASSY (LH ONLY)						1	
		701063-504	BRACKET ASSY (RH ONLY)						1	
			(ATTACHING PARTS)							
	-57	AN6-12A	BOLT						7	
	-58	AN960-616	WASHER						7	
	-59	102361-501	RETAINER ASSY						1	
	-60	NAS1031P8	NUTPLATE						2	
			(ATTACHING PARTS)							
	-61	MS20426AD5-6	RIVET						2	
	-62	NAS1031P6	NUTPLATE						1	
			(ATTACHING PARTS)							
		MS20426AD4-6	RIVET						2	
	-63	102361-1	RETAINER						1	
		102361-502	RETAINER ASSY						1	
		NAS1031P6	NUTPLATE						3	
			(ATTACHING PARTS)							
		MS20426AD4-6	RIVET						2	
	-64	102361-2	RETAINER						1	
		5102361-501	RETAINER ASSY						1	
		NAS1031P6	NUTPLATE						1	
			(ATTACHING PARTS)							
		MS20426AD4-6	RIVET						2	
	-65	5102361-1	RETAINER						1	
	-66	403012-3	BRACKET						1	
	-67	571070-3	SHIM						2	
		701073-1	SHIM						AR	
			A = AA5A-0283 AND SUBSEQUENT							
			B = AA5B-0400 AND SUBSEQUENT							

R

B
A



32G54-2

Main Landing Gear Wheel and Brake Assembly
Figure 32-2

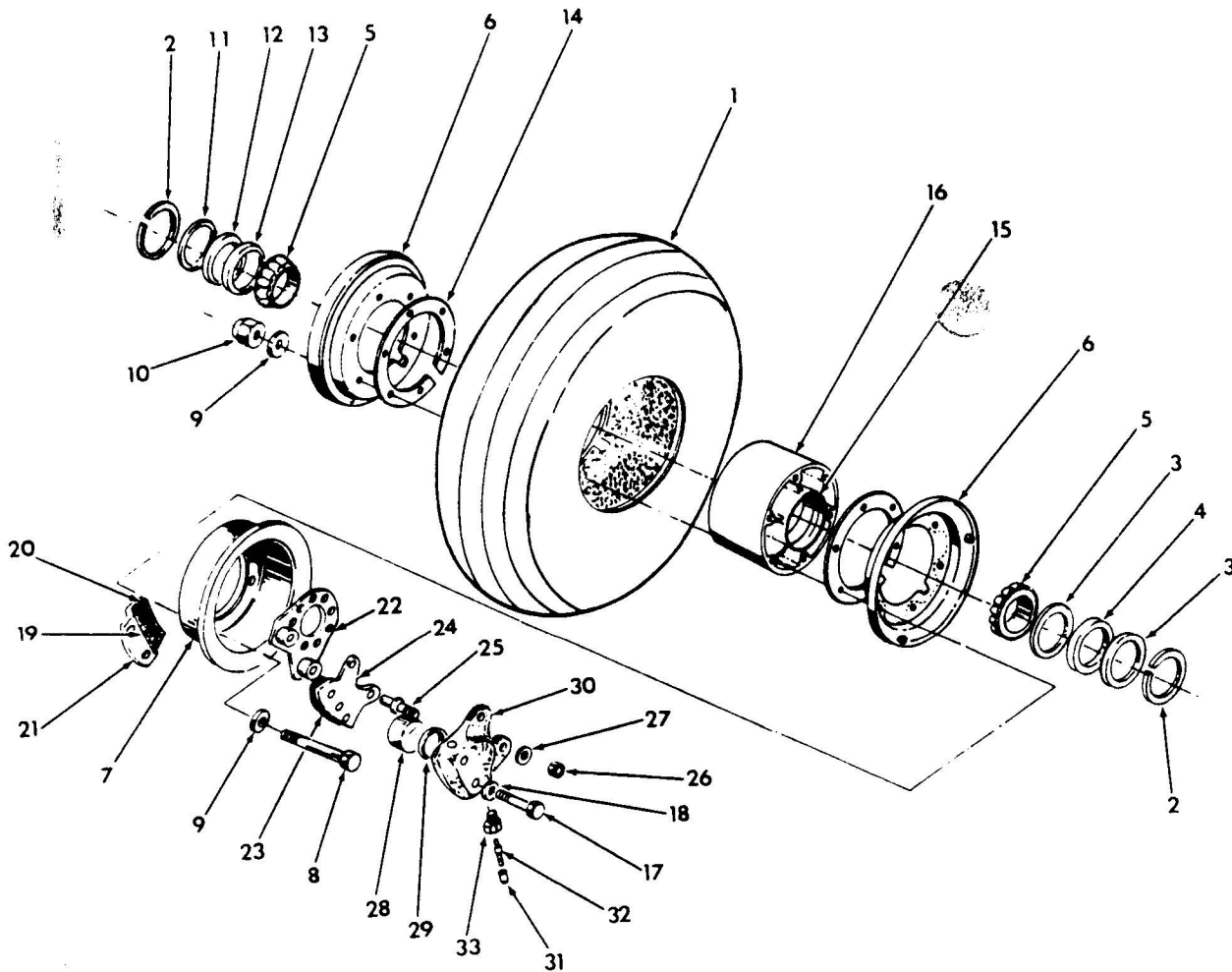
AA-5 SERIES
ILLUSTRATED PARTS CATALOG

Figure & Index No.	Part Number	Nomenclature	Units Per Assy	Usable On Code
32- 2 -	NO NUMBER	MAIN LANDING GEAR WHEEL AND BRAKE ASSY (V71513)	NP	
	- 1 6.00-6 TYPE II	TIRE, TUBE TYPE, BLACKWALL 4-PLY ALTERNATE PART: 6.00-6 TYPE II BLACKWALL, 6-PLY	REF	A
	6.00-6 TYPE II	TIRE, TUBE TYPE, WHITEWALL, 4-PLY (OPT) ALTERNATE PART: 6.00-6 TYPE II, WHITEWALL, 6-PLY (OPT)	AR	A
	5941-950-02	TIRE, TUBE TYPE, BLACKWALL, 6-PLY	REF	B
	5941-995-02	TIRE, TUBE TYPE, WHITEWALL, 6-PLY (OPT)	AR	B
	040-088C	WHEEL ASSY (V71513) (SEE FIGURE 32-1 FOR NHA)	1	
- 2	155-00100	SNAP RING	1	
- 3	153-00400	GREASE SEAL RING	2	
- 4	154-00300	GREASE SEAL FELT	1	
- 5	214-00200	BEARING	2	
- 6	214-00100	BEARING CUP	2	
- 7	153-01500	GREASE SEAL RING	1	
- 8	154-01300	GREASE SEAL FELT	1	
- 9	153-00300	GREASE SEAL RING	1	
-10	161-02700	WHEEL HALF ASSY (OUTER)	1	
-11	161-03000	WHEEL HALF ASSY (INNER)	1	
-12	164-02000	DISC ASSY, BRAKE (ATTACHING PARTS FOR ITEMS 10 THROUGH 12.)	1	
-13	103-20400	BOLT	3	
-14	095-10500	WASHER	3	
-15	094-10400	NUT	3	
	030-056B	BRAKE ASSY (V71513) (SEE FIGURE 32-1 FOR NHA)	1	
-16	074-01000	BACK PLATE ASSY (ATTACHING PARTS)	1	
-17	103-11600	BOLT	2	
-18	095-10200	WASHER	2	
	064-01500	BACK PLATE	1	
	066-03000	LINING	1	
	105-00200	RIVET	1	
-19	091-02200	CYLINDER ASSY (ATTACHING PARTS)	1	
-20	069-00400	ANCHOR BOLT	2	
-21	095-10200	WASHER	2	
-22	094-10300	NUT	2	
	061-01900	CYLINDER	1	
-23	081-00100	BLEEDER SEAT	1	
	079-00300	BLEEDER SCREW	1	
	183-00100	BLEEDER CAP	1	
-24	092-01700	PISTON ASSY	1	
	062-01600	PISTON	1	
	101-05200	O-RING	1	
-25	073-01100	PRESSURE PLATE ASSY	1	
	063-01200	PRESSURE PLATE	1	
	066-03000	LINING	1	
	105-00200	RIVET	1	
-26	075-05600	TORQUE PLATE ASSY	1	

A = AA5A-0283 AND SUBSEQUENT

B = AA5B-0400 AND SUBSEQUENT

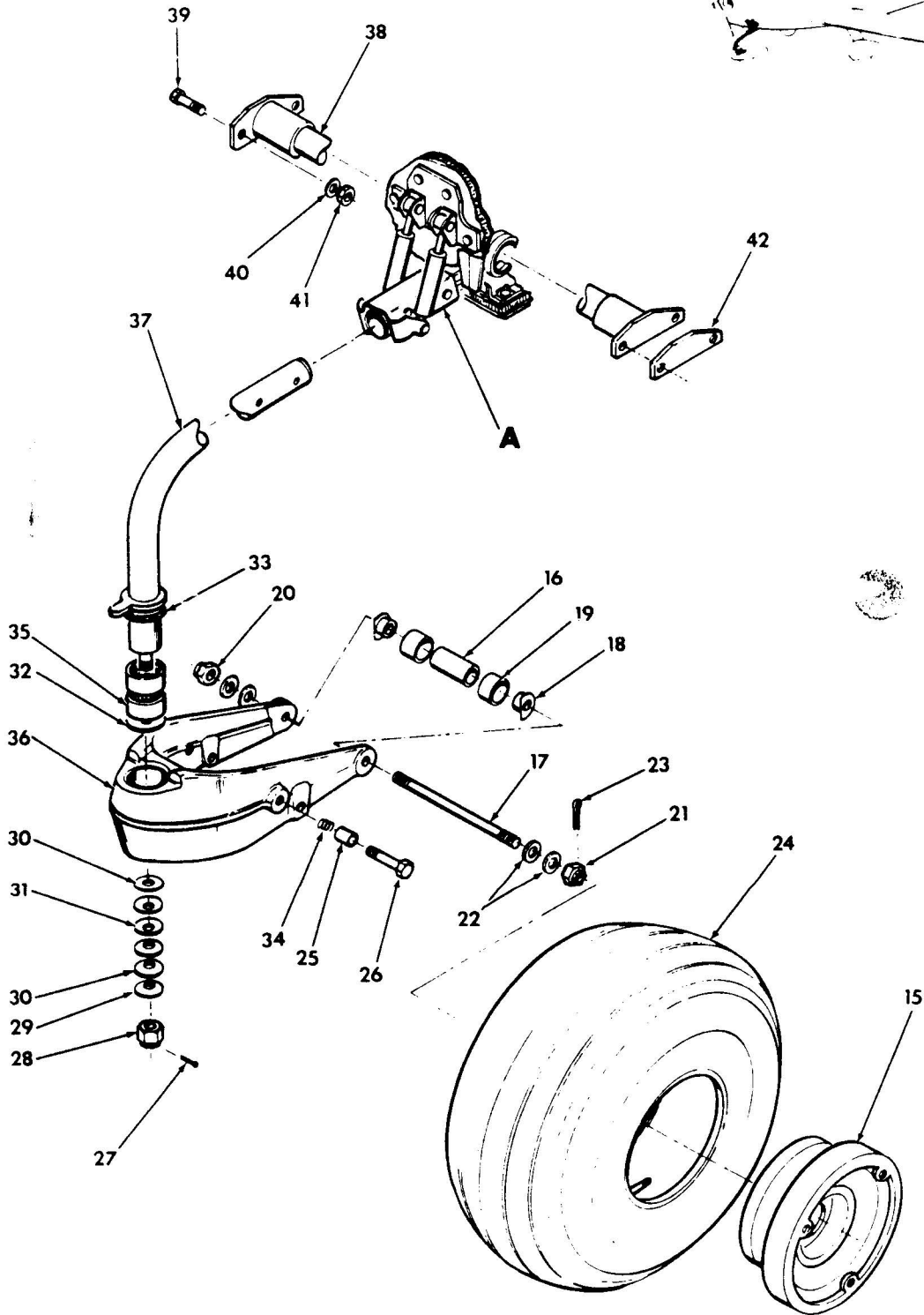
AA-5 SERIES
ILLUSTRATED PARTS CATALOG



32G54-3

Main Landing Gear Wheel and Brake Assembly
Figure 32-3

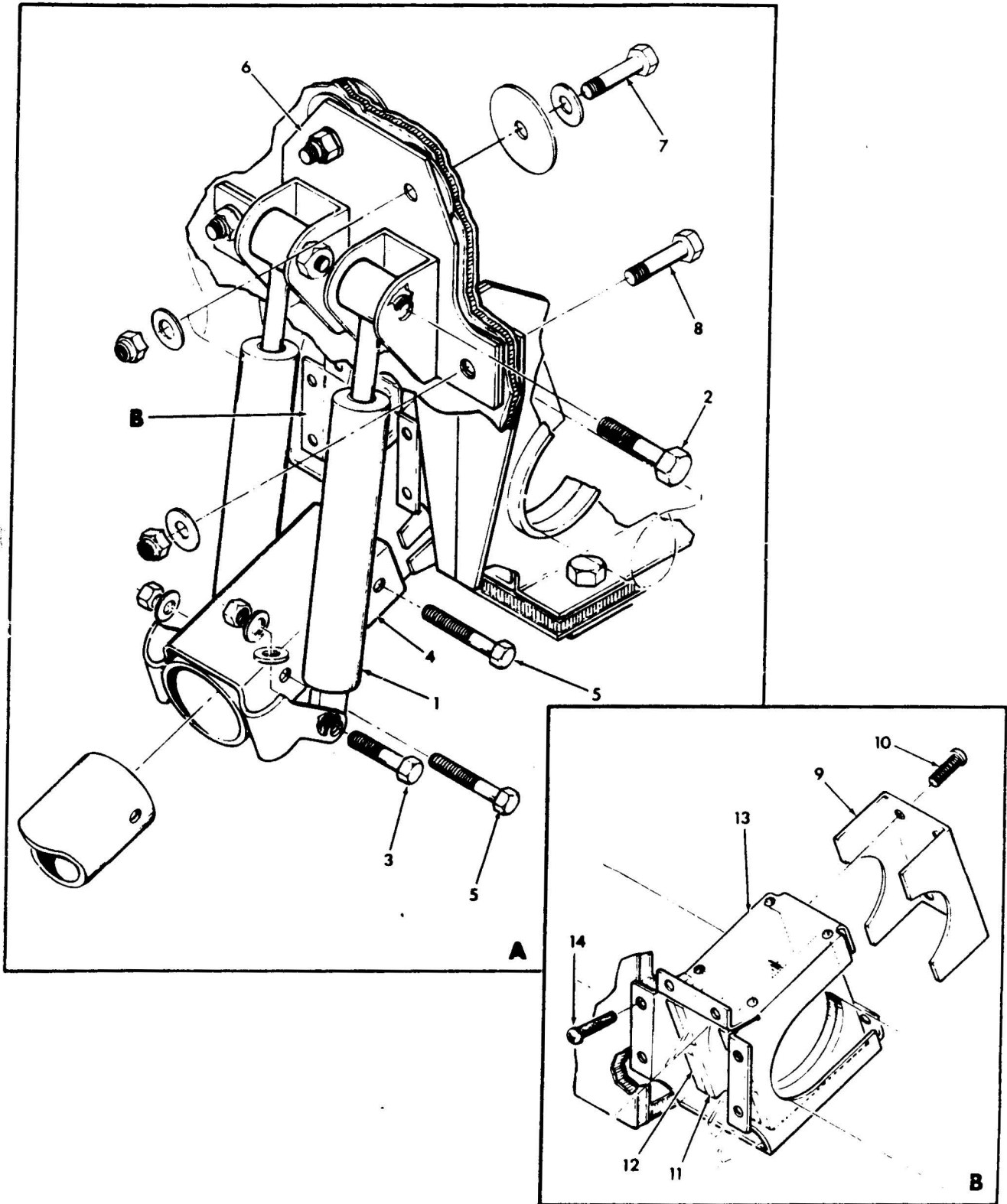
AA-5 SERIES
ILLUSTRATED PARTS CATALOG



Nose Landing Gear Installation
Figure 32-4 (Sheet 1 of 2)

32G54-4-1

AA-5 SERIES
ILLUSTRATED PARTS CATALOG



Nose Landing Gear Installation
Figure 32-4 (Sheet 2 of 2)

32G54-4 2

**AA-5 SERIES
ILLUSTRATED PARTS CATALOG**

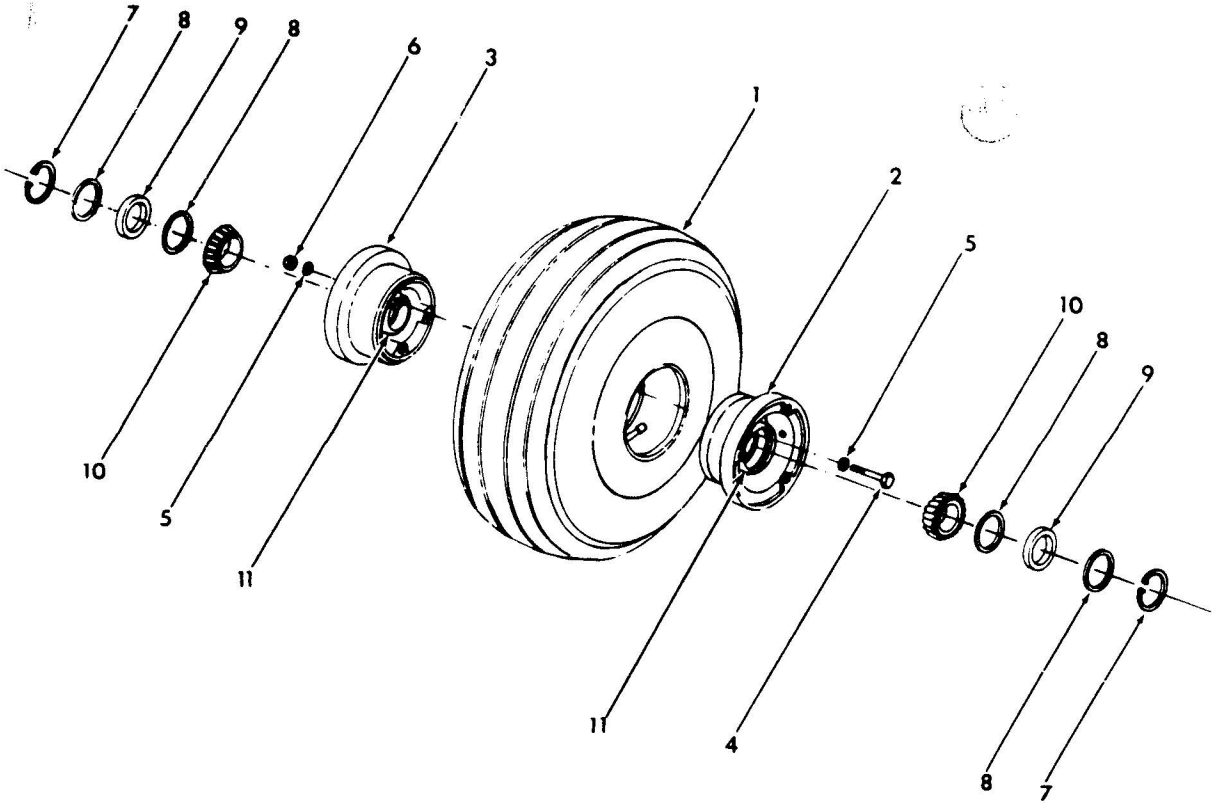
Figure & Index No.	Part Number	Nomenclature	Units Per Assy	Usable On Code		
					1	2
32-4-	702054-511	NOSE LANDING GEAR INSTALLATION	NP	R R R R R R R R R R R		
- 1	5702003-504	SHOCK ABSORBER INSTALLATION	NP			
	5702006-3	.SHOCK ABSORBER ASSY	2			
		(ATTACHING PARTS)				
- 2	AN6-15A	. BOLT (TOP)	1			
	AN960-616L	. WASHER	1			
	5702003-10	. BUSHING	1			
	MS20364-824	. NUT	1			
- 3	AN4-13	. BOLT (BOTTOM)	1			
	AN960-416L	. WASHER	AR			
	AN960-416	. WASHER	AR			
	AN310-4	. NUT	1			
	MS24665-132	. COTTER PIN	1			
- 4	5702003-503	. BRACKET ASSY	1			
		(ATTACHING PARTS)				
- 5	NAS464P6A31	. BOLT	2			
	AN960-616L	. WASHER	2			
	MS20365-624	. NUT	2			
- 6	5702003-502	. BRACKET ASSY	1			
		(ATTACHING PARTS)				
- 7	AN5-12A	. BOLT (UPPER)	2			
	AN960-516L	. WASHER	4			
	AN970-5	. WASHER	4			
	MS20365-524	. NUT	2			
- 8	AN6-13A	. BOLT (LOWER OUTBOARD)	2			
	AN6-14A	. BOLT (LOWER INBOARD)	2			
	AN960-616L	. WASHER	8			
	MS20365-324	. NUT	4			
- 9	5702005-501	. FIREWALL SEAL INSTALLATION	NP			
	5702005-3	. AFT BOX COVER	1			
		(ATTACHING PARTS)				
-10	GAES1021A6-4	. SCREW	4			
-11	5702005-5	. SEAL	2			
-12	5702005-4	. SEAL	2			
-13	5702005-502	. BOX ASSY	1			
		(ATTACHING PARTS)				
-14	GAES1021A6-4	. SCREW	6			
-15	040-07700	. WHEEL ASSY (V71513) (SEE FIGURE	REF			
		32-5 FOR DETAIL BREAKDOWN.)				
	C-30053	. WHEEL ASSY (V76275) (SEE FIGURE	REF			
		32-6 FOR DETAIL BREAKDOWN.)				
		(ATTACHING PARTS)				
-16	702053-1	. AXLE	1			
-17	702053-2	. AXLE ROD	1			
-18	702053-3	. PLUG	2			
-19	702053-5	. SPACER	2			
-20	MS20365-524	. NUT	1			
-21	AN310-5	. NUT	1			
-22	AN960-516	. WASHER	4			
-23	AN380-2-2	. COTTER PIN	1			
-24	5.00-5 TYPE III	. TIRE (SEE FIGURES 32-5 AND 32-6 FOR DETAIL	1			
		BREAKDOWN)				
	5.00-5	. TUBE	1			
-25	902019-4	. SPACER	2			
-26	AN5-10A	. BOLT	2			
	702069-501	. FORK ASSY	1			

AA-5 SERIES
ILLUSTRATED PARTS CATALOG

Figure & Index No.	Part Number	Nomenclature 1 2 3 4 5 6 7	Units Per Assy	Usable On Code
32- 4	-	(ATTACHING PARTS)		
-27	MS24665-353	COTTER PIN	1	
-28	AN320-10	NUT	1	
-29	AN960-1016L	WASHER	AR	
-30	702054-5	WASHER	2	
-31	AM341615	SPRING DISC (NATIONAL DISC AND SPRING DIVISION)	3	
-32	TT1508-2	THRUST BEARING (V79406)	AR	
	TT1508-1	THRUST BEARING (V79406)	AR	
-33	MS29513-224	O-RING	1	
-34	3591-5CN-0625	HELI-COIL	2	
-35	28DX24	BUSHING	2	
-36	702069-3	FORK	1	
-37	702057-507	STRUT ASSY	1	
-38	702065-502	TORQUE TUBE AND YOKE ASSY (ATTACHING PARTS)	1	
-39	AN176-10A	BOLT	4	
-40	AN960-616	WASHER	AR	
-41	MS20365-624	NUT	4	
-42	702059-1	SHIM	AR	
	THROUGH 702059-8			

R
R
R
R
R
R
R
R
R
R
R
R
R
R
R
R
R

AA-5 SERIES
ILLUSTRATED PARTS CATALOG



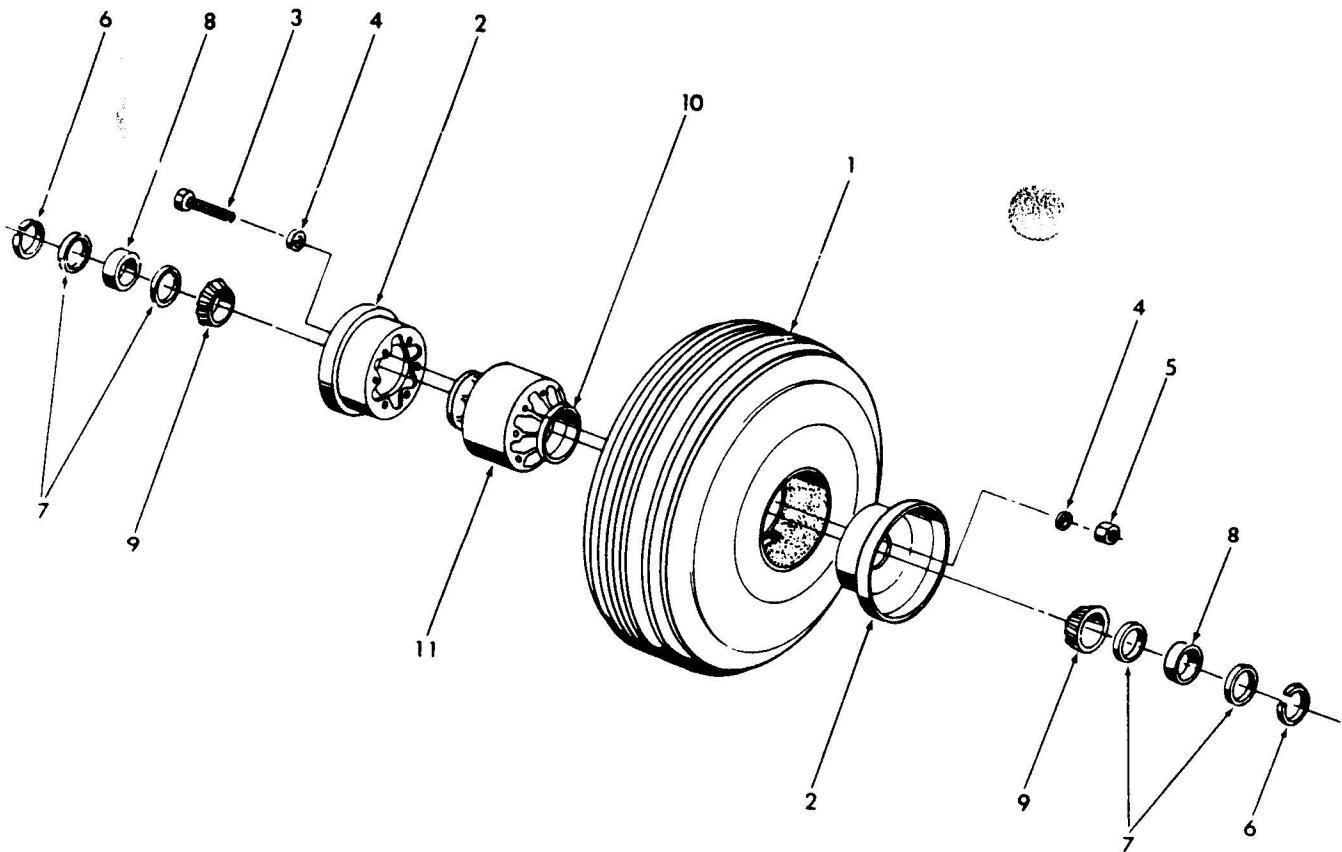
Nose Landing Gear Wheel and Tire Assembly
Figure 32-5

32G34-5

AA-5 SERIES
ILLUSTRATED PARTS CATALOG

Figure & Index No.	Part Number	Nomenclature							Units Per Assy	Usable On Code
		1	2	3	4	5	6	7		
32- 5 -	NO NUMBER	NOSE LANDING GEAR WHEEL AND TIRE ASSY (V71513)							1	
- 1	5.00-5 TYPE III	TIRE, 4-PLY RATING							REF	
		ALTERNATE PART: 5.00-5 TYPE III 6-PLY RATING (STD)								
	5941-949-02	TIRE, WHITEWALL, 4-PLY RATING (OPT)							AR	A
	5.00-5 TYPE III	ALTERNATE PART: 5941-970-02								
	5941-970-02	TIRE, 6-PLY RATING (STD)							1	B
	040-07700	TIRE, WHITEWALL, 6-PLY RATING (OPT)							AR	B
- 2	162-02800	WHEEL ASSY (V71513)(SEE FIGURE 32-4 FOR NHA)							1	
- 3	161-03100	WHEEL HALF ASSY (LH)							1	
		WHEEL HALF ASSY (RH)							1	
		(ATTACHING PARTS FOR ITEMS 2 AND 3)								
- 4	AN4-22A	BOLT							3	
- 5	AN960-416	WASHER							6	
- 6	MS20365-428	NUT							3	
- 7	155-00200	SNAP RING							2	
- 8	153-00800	GREASE SEAL RING							4	
- 9	154-00600	GREASE SEAL FELT							2	
- 10	214-00400	BEARING							2	
- 11	214-00300	CUP, BEARING							2	
		A = AA5A-0283 AND SUBSEQUENT								
		B = AA5B-0400 AND SUBSEQUENT								

AA-5 SERIES
ILLUSTRATED PARTS CATALOG



Nose Landing Gear Wheel and Tire Assembly
Figure 32-6

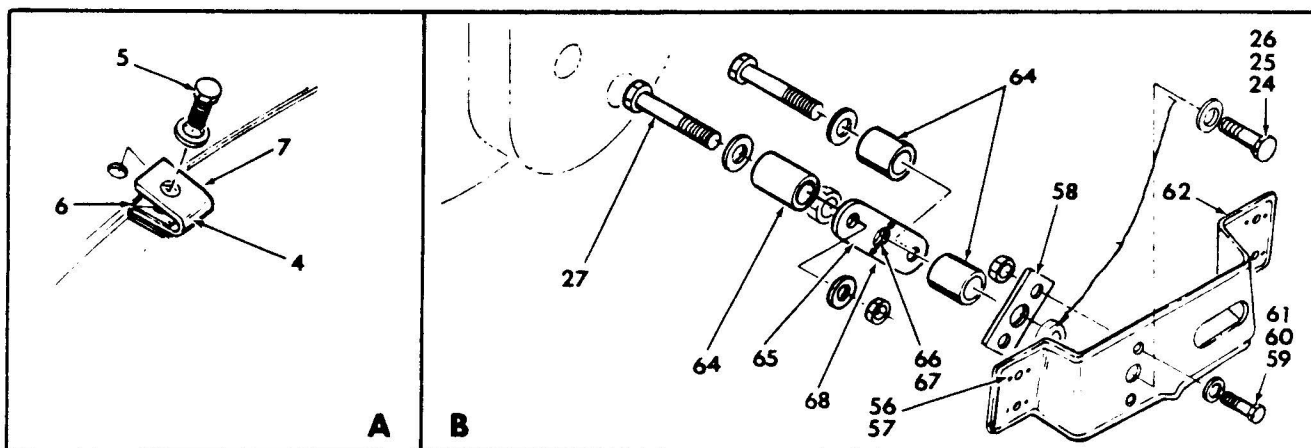
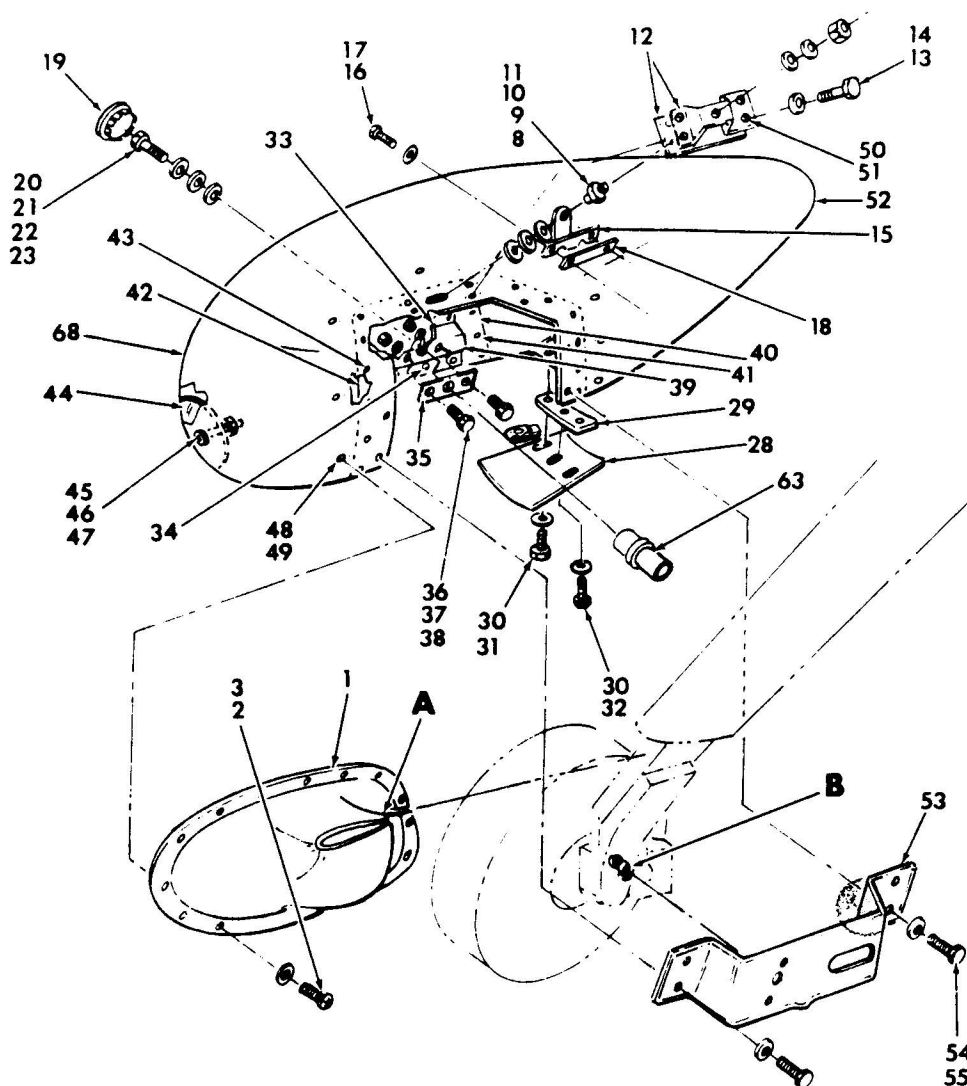
32G54-6

AA-5 SERIES
ILLUSTRATED PARTS CATALOG

Figure & Index No.	Part Number	Nomenclature							Units Per Assy	Usable On Code
		1	2	3	4	5	6	7		
32- 6 -	NO NUMBER	NOSE LANDING GEAR WHEEL AND TIRE ASSY (V76275)							1	
- 1	5.00-5 TYPE III	TIRE, 4-PLY RATING							REF	A
		ALTERNATE PART: 5.00-5 TYPE III								
	5941-949-02	6-PLY RATING (STD)								
		TIRE, WHITEWALL, 4-PLY RATING (OPT)							AR	
		ALTERNATE PART: 59-41-970-02								
	5.00-5 TYPE III	TIRE, 6-PLY RATING (STD)							1	B
	5941-0970-02	TIRE, WHITEWALL, 6-PLY RATING (OPT)							AR	B
	C-30053	NOSE WHEEL ASSY							1	
- 2	D-30058	WHEEL HALF ASSY							2	
		(ATTACHING PARTS)								
- 3	A-2513-34	BOLT							5	
- 4	A-1638-15	WASHER							12	
- 5	A-1639-26	NUT							6	
- 6	A-1636-23	SNAP RING							2	
- 7	A-30048	GREASE SEAL RING							4	
- 8	A-30047	GREASE SEAL FELT							2	
- 9	A-30078-2	BEARING							2	
	C-30098	HUB ASSY							1	
-10	A-30078-1	CUP							2	
-11	D-30055	HUB							1	
		A = AA5A-0283 AND SUBSEQUENT								
		B = AA5B-0400 AND SUBSEQUENT								

R

AA-5 SERIES
ILLUSTRATED PARTS CATALOG



32G54 7

Main Landing Gear Fairing Installation
Figure 32-7

AA-5 SERIES
ILLUSTRATED PARTS CATALOG

Figure & Index No.	Part Number	Nomenclature	Units	Usable On Code	
			Per Assy		
32- 7 -	5804025-501	MAIN LANDING GEAR FAIRING INSTALLATION (LH) (OPT)	AR		
	5804025-502	MAIN LANDING GEAR FAIRING INSTALLATION (RH) (OPT)	AR		
	- 1	5701050-3 5701050-4	FAIRING (LH ONLY) FAIRING (RH ONLY)	1 1	
			(ATTACHING PARTS)		
	- 2	MS24694S4	SCREW	12	
	- 3	A3135-017-24A	WASHER (V78533)	13	

	- 4	5701050-501	CLIP ASSY	1	
			(ATTACHING PARTS)		
	- 5	GAES1022Z6-6 A3135-017-24A	SCREW WASHER (V78533)	1 1	

	- 6	A1784-6Z-1	NUT (V78533)	2	
	- 7	5701050-8	CLIP	1	
		5804022-509	WHEEL FAIRING INSTALLATION (LH ONLY)	1	
		5804022-510	WHEEL FAIRING INSTALLATION (RH ONLY)	1	
		5804022-511	FAIRING ASSY (LH ONLY)	1	
		5804022-512	FAIRING ASSY (RH ONLY)	1	
			NOTE: SEE ALSO 5804022-901 AND 5804022-902 BELOW. THESE ARE RESPECTIVELY IDENTICAL TO THE -511 AND -512 EXCEPT THAT THE SCRAPER, BACK PLATE AND ATTACHING PARTS ARE OMITTED.		
			(ATTACHING PARTS)		
	- 8	J4624-4	FLEX BOLT (V76005)	1	
	- 9	MS35649-2252	NUT	2	
	-10	AN936A416	WASHER	2	
	-11	AN960-416L	WASHER	2	
	-12	5804019-2	PLATE	1	
	-13	AN3-5A	BOLT	4	
	-14	AN960-10	WASHER	4	
	-15	5804019-1	SUPPORT	1	
	-16	AN6-23A	BOLT	2	
			NOTE: REPLACES AN6-22A BOLT IN STANDARD MLG INSTALLATION.		
	-17	AN960-616	WASHER	2	AR
	-18	5804023-4	SHIM	AR	AR
		5804023-5	SHIM	1	
	-19	NAS451-56	PLUG BUTTON <i>See DP. 170</i>	1	
-20	GAES1024-1	BOLT	1		
-21	AN936A516	WASHER	1		
-22	AN960-516	WASHER	1		
-23	804046-3	BEARING	1		
-24	AN6-14A	BOLT	1		
-25	AN960-616	WASHER	4		
-26	804046-2	BEARING	1		
-27	AN6-24A	BOLT	2		
		NOTE: REPLACES AN6-14A AND AN6-16A USED ON STANDARD INSTALLATION. USE NUTS AND WASHERS FROM STANDARD INSTALLATION.			

-28	5804022-7	SCRAPER	1		
-29	804019-504	PLATE ASSY (ATTACHING PARTS FOR ITEMS -28 and -29)	1		

-30	AN3-5A	BOLT	3		
-31	AN970-3	WASHER	2		
-32	AN960-10	WASHER	1		

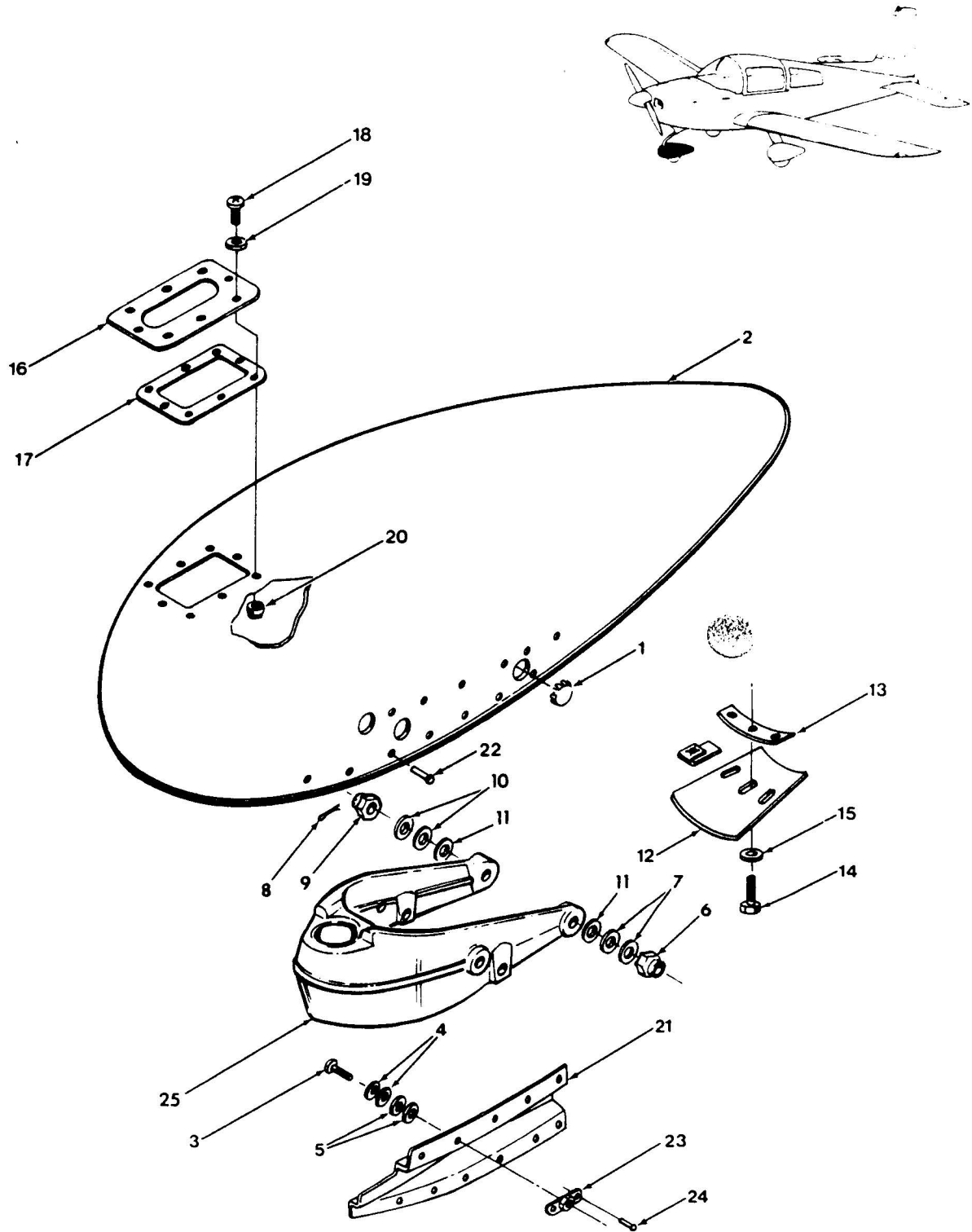
	RM52LHA4972-8-02	NUT CLIP (ESNA)	3		
	804019-7	PLATE	1		
-33	804021-507	BRACKET ASSY (LH ONLY)	1		
	804021-508	BRACKET ASSY (RH ONLY)	1		

AA-5 SERIES
ILLUSTRATED PARTS CATALOG

Figure & Index No.	Part Number	Nomenclature							Units Per Assy	Usable On Code
		1	2	3	4	5	6	7		
32- 7	-									
								(ATTACHING PARTS)		
	-34	MS20470AD4-6						RIVET	8	
		NAS1739B4-3						RIVET	8	
	-35	804046-1						PLATE	1	
								(ATTACHING PARTS)		
	-36	AN3-4A						BOLT	2	
	-37	AN960-10						WASHER	2	
	-38	MS20365-1032						NUT	2	
	-39	804021-5						BRACKET (LH ONLY)	1	
		804021-6						BRACKET (RH ONLY)	1	
	-40	5804022-3						DOUBLER, OUTBOARD (LH ONLY)	1	
		5804022-4						DOUBLER, OUTBOARD (RH ONLY)	1	
								(ATTACHING PARTS)		
	-41	1601-0410						RIVET (V19738)	16	
	-42	5804022-5						DOUBLER (LH ONLY)	1	
		5804022-6						DOUBLER (RH ONLY)	1	
								(ATTACHING PARTS)		
	-43	1601-0410						RIVET (V19738)	19	
	-44	5804022-9						WEIGHT	1	
								(ATTACHING PARTS)		
	-45	NAS221-17						SCREW	1	
	-46	AN960-10L						WASHER	2	
	-47	MS20364-1032						NUT	1	
	-48	NAS680A08						NUTPLATE	12	
								(ATTACHING PARTS)		
	-49	1204-0308						RIVET (V19738)	2	
	-50	NAS680A3						NUTPLATE	4	
								(ATTACHING PARTS)		
	-51	MS20426AD3-4						RIVET	2	
	-52	5804022-513						SHELL ASSY, TRIMMED (LH ONLY)	1	
		5804022-514						SHELL ASSY, TRIMMED (RH ONLY)	1	
	-53	804021-505						BRACKET ASSY (LH ONLY)	1	
		804021-506						BRACKET ASSY (RH ONLY)	1	
								(ATTACHING PARTS)		
	-54	AN3-5A						BOLT	4	
	-55	AN970-3						WASHER	4	
	-56	NAS680A3						NUTPLATE	4	
								(ATTACHING PARTS)		
	-57	1204-0308						RIVET (V19738)	2	
	-58	804046-1						PLATE	1	
								(ATTACHING PARTS)		
	-59	AN3-5A						BOLT	2	
	-60	AN960-10						WASHER	2	
	-61	MS20365-1032						NUT	2	
	-62	804021-7						BRACKET (LH ONLY)	1	
		804021-8						BRACKET (RH ONLY)	1	
	-63	804021-509						ADAPTER ASSY	1	
	-64	804046-5						SPACER	1	
		804046-6						SPACER	2	
	-65	804046-501						SUPPORT ASSY	1	
	-66	NAS1031P6						NUTPLATE	1	
								(ATTACHING PARTS)		
	-67	1604-0412						RIVET (V19738)	2	
	-68	804046-4						SUPPORT	1	
		5804022-903						FAIRING ASSY (LH) SPARES	AR	
		5804022-904						FAIRING ASSY (RH) SPARES	AR	

R
R

AA-5 SERIES
ILLUSTRATED PARTS CATALOG

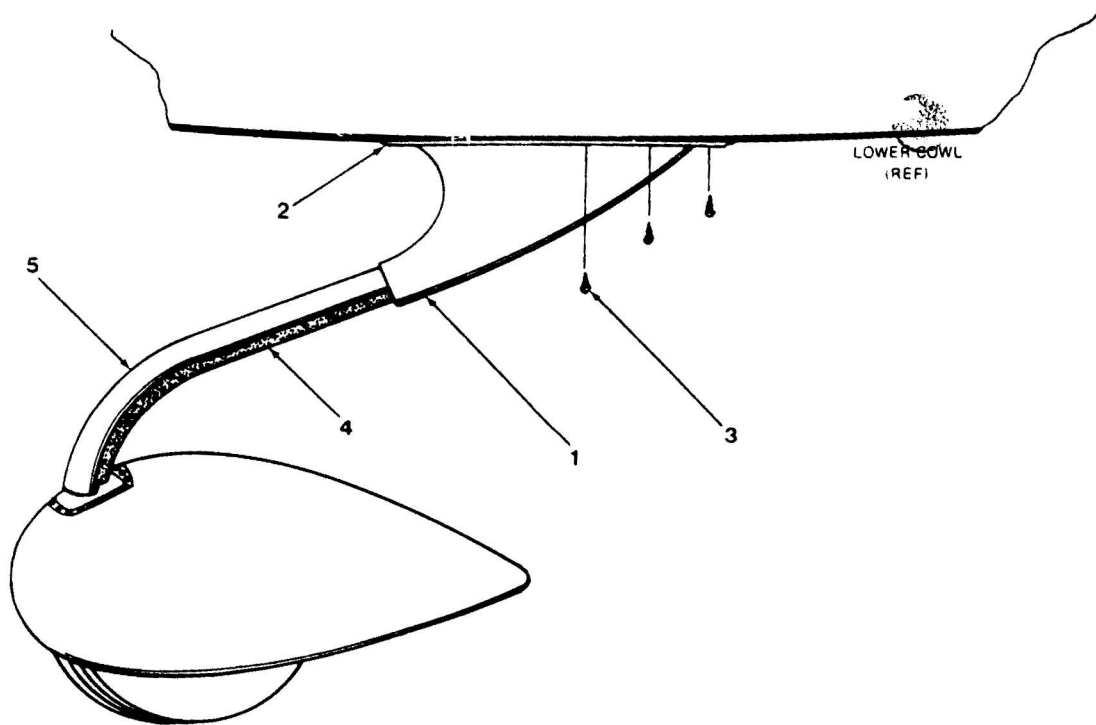
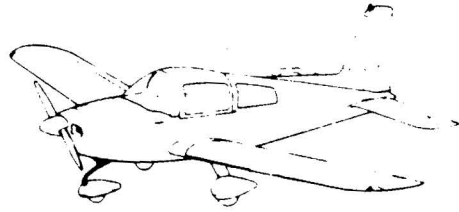


Nose Wheel Fairing Assembly and Installation
Figure 32-8

32G54-8

AA-5 SERIES
ILLUSTRATED PARTS CATALOG

Figure & Index No.	Part Number	Nomenclature							Units Per Assy	Usable On Code
		1	2	3	4	5	6	7		
32- 8 -	804019-507	NOSE WHEEL FAIRING ASSY AND INSTALLATION (OPT)							AR	
- 1	NAS451-56	PLUG BUTTON							2	
- 2	804019-508	FAIRING ASSY							1	
		(ATTACHING PARTS)								
- 3	AN4-7A	BOLT							2	
- 4	AN960-416	WASHER							2	
- 5	AN960PD416	WASHER							2	
- 6	MS20365-524	NUT							REF	
- 7	AN960-516	WASHER							REF	
- 8	AN380-2-2	COTTER PIN							REF	
- 9	AN310-5	NUT							REF	
-10	AN960-516	WASHER							REF	
-11	AN960PD516	WASHER							2	
-12	804019-4	SCRAPER							1	
-13	804019-504	PLATE ASSY							1	
		(ATTACHING PARTS FOR ITEMS -12 AND -13)								
-14	AN3-5A	BOLT							3	
-15	AN960-10	WASHER							3	
	RM52LHA4972-8-02	CLIP NUT (ESNA)							3	
	804019-7	PLATE							1	
-16	804019-21	RETAINER							1	
-17	804019(22) -26	GASKET							1	
		(ATTACHING PARTS)								
-18	NAS1189-06-10L	SCREW							8	
-19	AN960D10L	WASHER							AR	
-20	A6K120	RIVNUT (V03481)							8	
-21	804019-E05	BRACKET ASSY (LH)							1	
	804019-506	BRACKET ASSY (RH)							1	
		(ATTACHING PARTS)								
-22	MS20470AD4-5	RIVET							12	
	NAS1738B4-3	RIVET (ALT)							12	
-23	NAS680A4	NUTPLATE							1	
		(ATTACHING PARTS)								
-24	1204-0306	RIVET (V19738)							2	
	804019-11	BRACKET							1	
	804019-12	FAIRING							1	
-25	702069-501	FORK ASSY (SEE FIGURE 32-4 FOR DETAIL BREAKDOWN OF NLG.)							REF	



Nose Landing Gear Strut Fairing Installation
Figure 32-9

32054-9

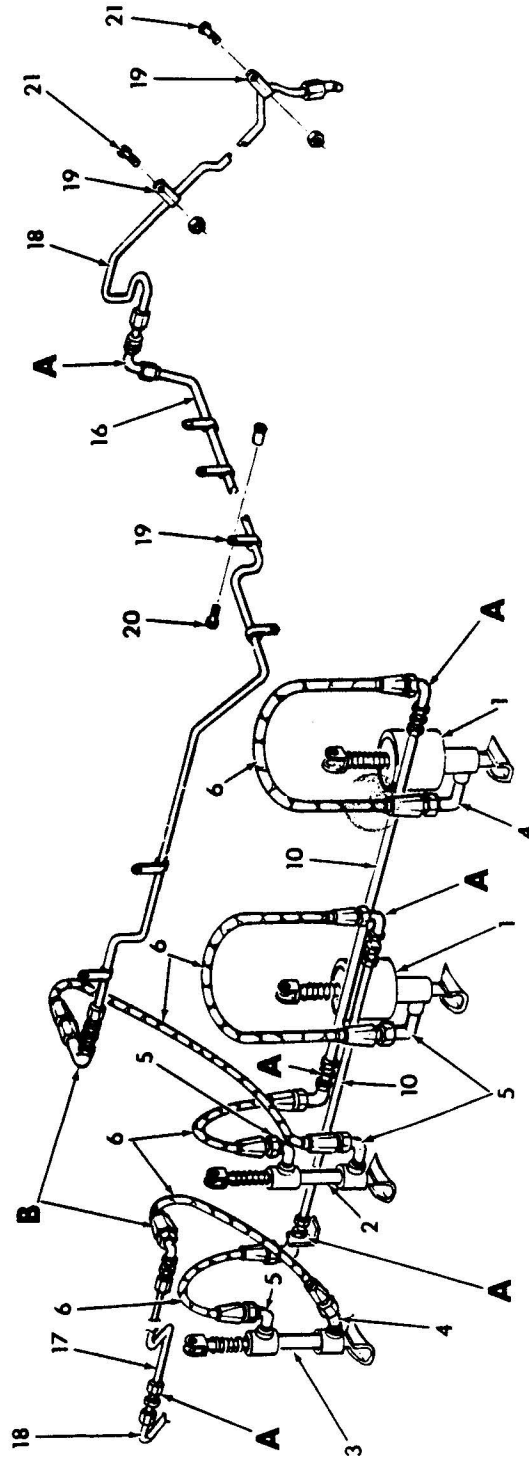
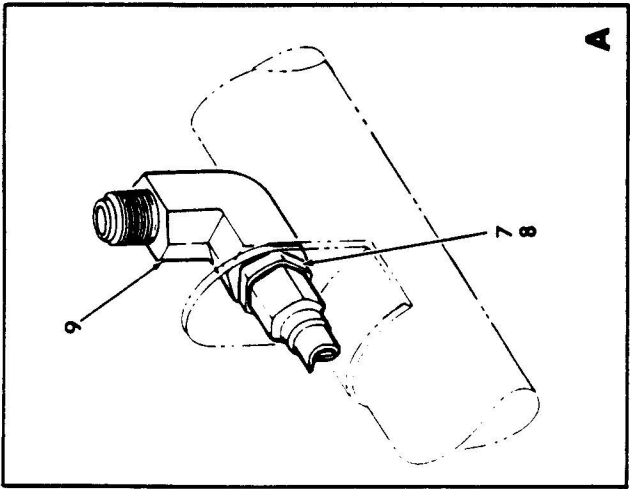
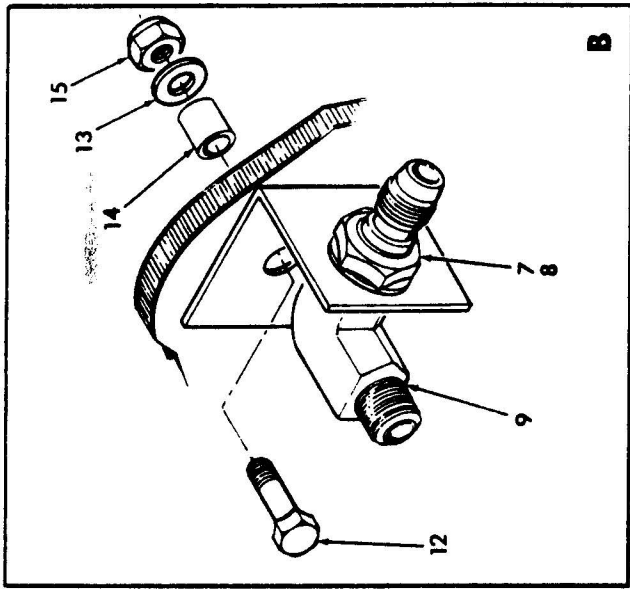
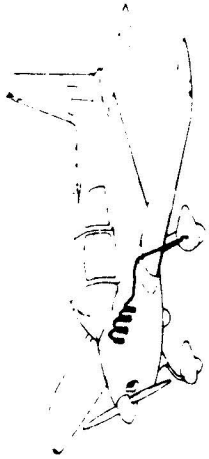
AA-5 SERIES
ILLUSTRATED PARTS CATALOG

Figure & Index No.	Part Number	Nomenclature	Units Per Assy	Usable On Code	
		1 2 3 4 5 6 7			
32- 9 -	5702001-501	NOSE LANDING GEAR STRUT FAIRING INSTALLATION (STD)	NP		
	5702001-502	NOSE LANDING GEAR STRUT FAIRING INSTALLATION (OPT)	AR		
	- 1	5702002-3	BOOT	1	
	- 2	5702002-2	RETAINER	1	
			(ATTACHING PARTS)		
	- 3	MS35206-245	SCREW	11	

	- 4	5702001-1	FAIRING (STD)	1	
		5702001-2	FAIRING (OPT)	AR	
		5702001-903	FAIRED STRUT ASSY (SPARES) (STD)	AR	
	- 5	702057-507	STRUT ASSY	1	
		5702001-1	FAIRING	1	
		5702001-904	FAIRED STRUT ASSY (SPARES) (OPT)	AR	
		702057-507	STRUT ASSY	1	
		5702001-1	FAIRING	1	

AA-5 SERIES
ILLUSTRATED PARTS CATALOG

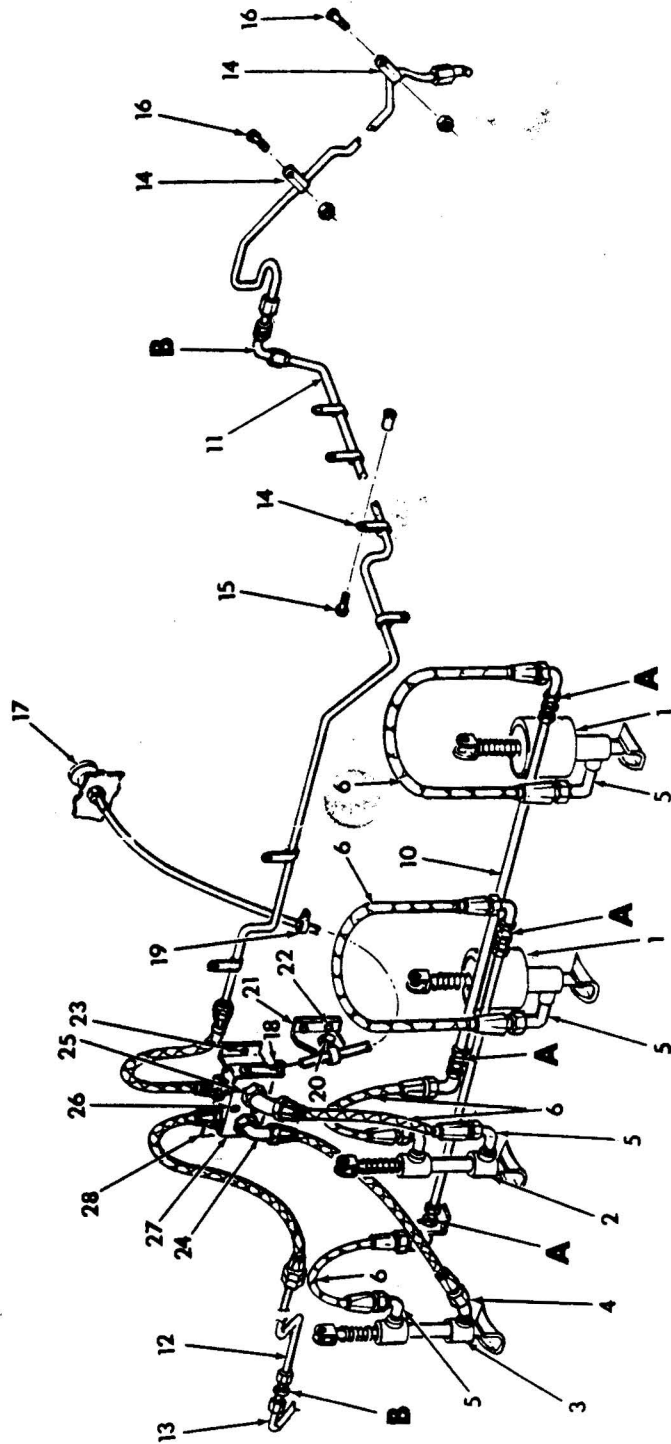
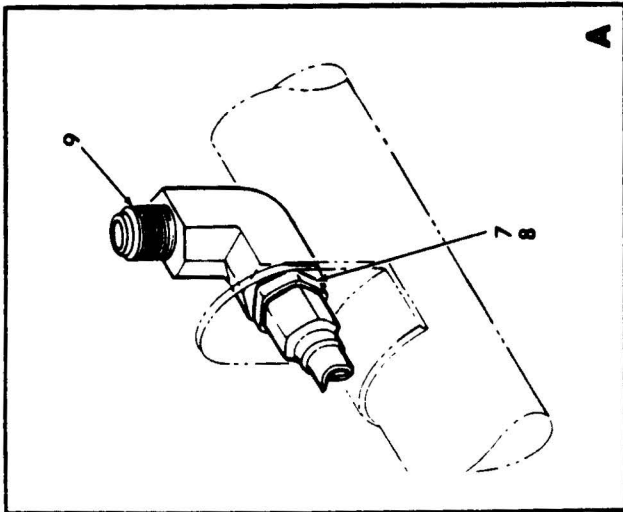
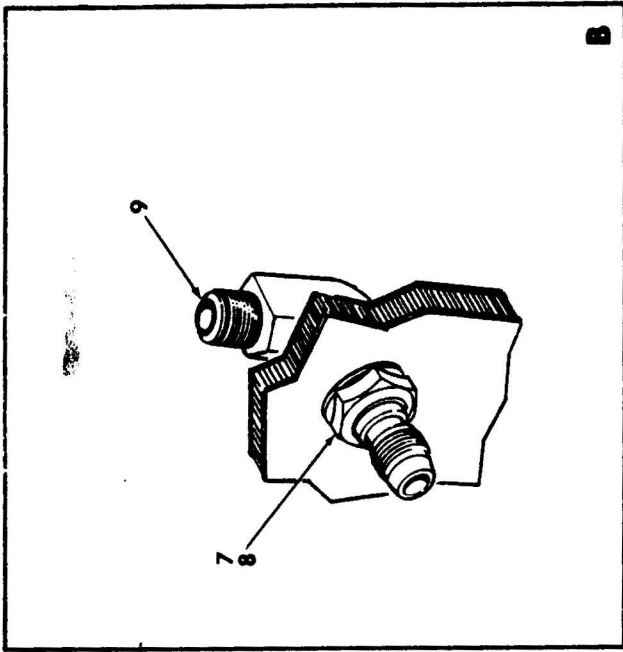
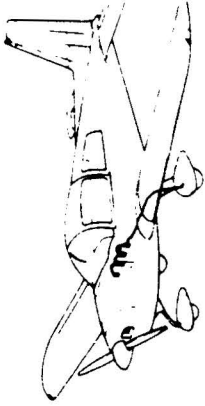
32A54 10



Brake System Installation (1977 Models)
Figure 32-10

AA-5 SERIES
ILLUSTRATED PARTS CATALOG

Figure & Index No.	Part Number	Nomenclature	Units Per Assy	Usable	
				On	Code
		1 2 3 4 5 6 7			
32- 10 -	5403009-501	BRAKE SYSTEM INSTALLATION, SINGLE (STD)	NP	A	
		(NOT SHOWN)			
	5403009-507	BRAKE SYSTEM INSTALLATION, SINGLE (STD)	NP	B	
		(NOT SHOWN)			
	5403009-502	BRAKE SYSTEM INSTALLATION, DUAL (OPT)	AR	A	
	5403009-508	BRAKE SYSTEM INSTALLATION, DUAL (OPT)	AR	B	
- 1	403010-4	MASTER CYLINDER (SEE FIGURE 32-13 FOR	REF	AB	R
		DETAIL BREAKDOWN - SEE FIGURE 27-5			
		FOR INSTALLATION)			
	403010-2	MASTER CYLINDER (SEE FIGURE 32-13 FOR	REF	E	R
		DETAIL BREAKDOWN - SEE FIGURE 27-5			
		FOR INSTALLATION)			
	403010-5	MASTER CYLINDER (SEE FIGURE 32-13 FOR	REF	D	R
		DETAIL BREAKDOWN - SEE FIGURE 27-5			
		FOR INSTALLATION)			
- 2	403017-501	MASTER CYLINDER (SEE FIGURE 32-14 FOR	REF	C	R
		DETAIL BREAKDOWN - SEE FIGURE 27-5			
		FOR INSTALLATION)			
	403017-503	MASTER CYLINDER (SEE FIGURE 32-14 FOR	REF	D	R
		DETAIL BREAKDOWN - SEE FIGURE 27-5			
		FOR INSTALLATION)			
- 3	403017-502	MASTER CYLINDER (SEE FIGURE 32-14 FOR	REF	C	R
		DETAIL BREAKDOWN - SEE FIGURE 27-5			
		FOR INSTALLATION)			
	403017-504	MASTER CYLINDER (SEE FIGURE 32-14 FOR	REF	D	R
		DETAIL BREAKDOWN - SEE FIGURE 27-5			
		FOR INSTALLATION)			
- 4	AN823-4D	ELBOW	2		
- 5	AN822-4D	ELBOW	4		
- 6	MS26741 -4-0110	HOSE ASSY	6		
- 7	AN924-4D	NUT	8		
- 8	AN960-716	WASHER	16		
- 9	AN833-4D	ELBOW	8		
-10	403009-503	TUBE ASSY	2		
-11	403009-3	BRACKET	2		
		(ATTACHING PARTS)			
-12	AN3-10A	BOLT	2		
-13	AN960-10	WASHER	2		
-14	902015-2	BUSHING	2		
-15	AN364-1032	NUT	2		
-16	5403009-503	TUBE ASSY	1	A	
	5403009-510	TUBE ASSY	1	B	
-17	5403009-504	TUBE ASSY	1		
-18	403009-509	TUBE ASSY (LH)	1		
	403009-508	TUBE ASSY (RH)	1		
-19	MS21919DG4	CLAMP	12		
-20	AN526-832R8	SCREW	8		
	A8-75	RIVNUT (V03481)	8		
-21	AN526-1032R8	SCREW	4		
	AN364-1032	NUT	4		
		A = AA5A-0283 THRU AA5A-0522			
		B = AA5B-0400 THRU AA5B-0692			
		C = AA5A-0283 THRU 0704 AA5B-0400 THRU 0944			
		D = AA5A-0705 AND SUBSEQUENT AA5B-0945 AND SUBSEQUENT			
		E = AA5A-0523 THRU 0704 AA5B-0693 THRU 0944			



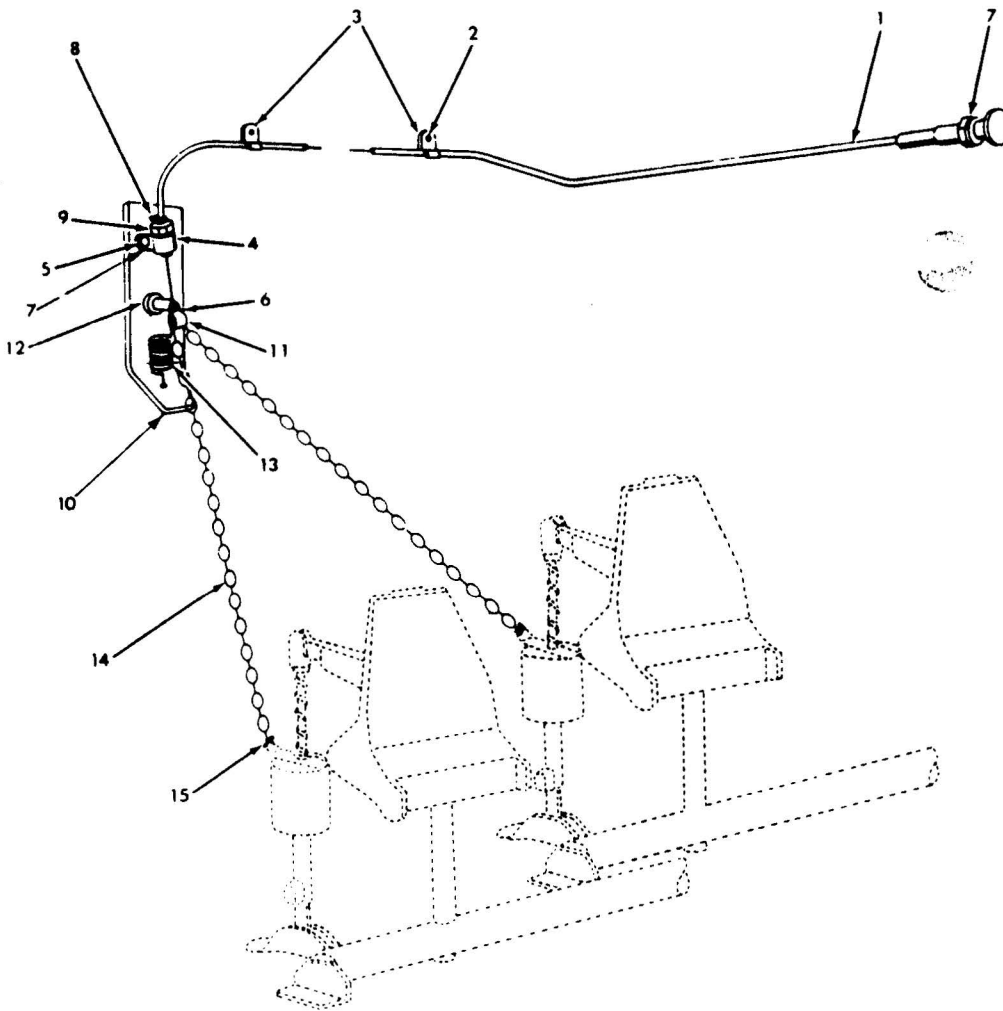
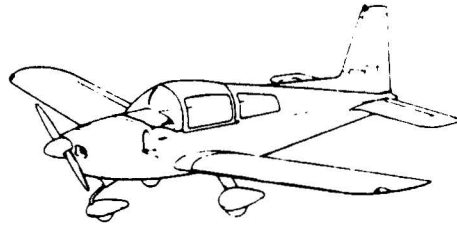
Brake System Installation (1978 Models)
Figure 32-11

AA-5 SERIES
ILLUSTRATED PARTS CATALOG

Figure & Index No.	Part Number	Nomenclature	Units	Usable
			Per Assy	On Code
32- 11 -	5403009-501	1 2 3 4 5 6 7 BRAKE SYSTEM INSTALLATION, SINGLE (STD) (NOT SHOWN)	NP	A
	5403009-507	BRAKE SYSTEM INSTALLATION, SINGLE (STD) (NOT SHOWN)	NP	B
- 1	5403009-511 403010-4	BRAKE SYSTEM INSTALLATION, DUAL (OPT) MASTER CYLINDER (SEE FIGURE 32-13 FOR DETAIL BREAKDOWN - SEE FIGURE 27-5 FOR INSTALLATION)	AR REF	
- 2	403017-501	MASTER CYLINDER (SEE FIGURE 32-14 FOR DETAIL BREAKDOWN - SEE FIGURE 27-5 FOR INSTALLATION)	REF	
- 3	403017-502	MASTER CYLINDER (SEE FIGURE 32-14 FOR DETAIL BREAKDOWN - SEE FIGURE 27-5 FOR INSTALLATION)	REF	
- 4	AN823-4D	ELBOW	2	
- 5	AN822-4D	ELBOW	4	
- 6	MS28741-4-0110	HOSE ASSY	6	
- 7	AN924-4D	NUT	6	
- 8	AN960-716	WASHER	12	
- 9	AN833-4D	ELBOW	6	
-10	403009-503	TUBE ASSY	2	
-11	5403009-503	TUBE ASSY	1	A
	5403009-510	TUBE ASSY	1	B
-12	5403009-504	TUBE ASSY	1	
-13	403009-509	TUBE ASSY (LH)	1	
	403009-508	TUBE ASSY (RH)	1	
-14	MS21919DG4	CLAMP	12	
-15	AN526-832R8	SCREW	8	
	AE-75	RIVNUT (V03481)	8	
-16	AN526-1032R8	SCREW	4	
	AN364-1032	NUT	4	
-17	64-032-737	CONTROL CABLE (V70436) (ATTACHING PARTS)	1	
-18	FT191	WIRE STOP	1	
-19	MS21919DG2	CLAMP	2	
-20	AN3-10	BOLT	2	
	AN960-10L	WASHER	2	
	MS21083N3	NUT	2	
-21	5403010-1	BRACKET (ATTACHING PARTS)	1	
-22	AN3-10A	BOLT	2	
	AN960-10	WASHER	2	
	902015-2	BUSHING	2	
	AN364-1032	NUT	2	
	7C10404-31	VALVE ASSY, PARKING BRAKE (ATTACHING PARTS)	1	
-23	AN3-10A	BOLT	2	
	AN960-3	WASHER	2	
	902015-2	BUSHING	4	
	AN364-1032	NUT	2	
-24	AN822-4D	ELBOW	1	
-25	AN823-4D	ELBOW	1	
-26	NAS221-18	BOLT	2	
	AN960-10L	WASHER	2	
-27	A-850-8	VALVE (V31720)	1	
-28	7C10404-7	SUPPORT ASSY	1	
		A = AA5A-0523 AND SUBSEQUENT		
		B = AA5B-0693 AND SUBSEQUENT		

R

AA-5 SERIES
ILLUSTRATED PARTS CATALOG



Parking Brake Installation (1977 Models)
Figure 32-12

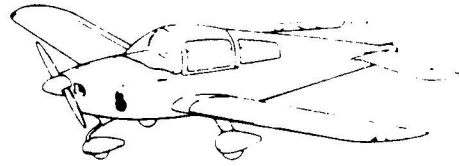
32G54-12

32
Page 28
Dec 15/77

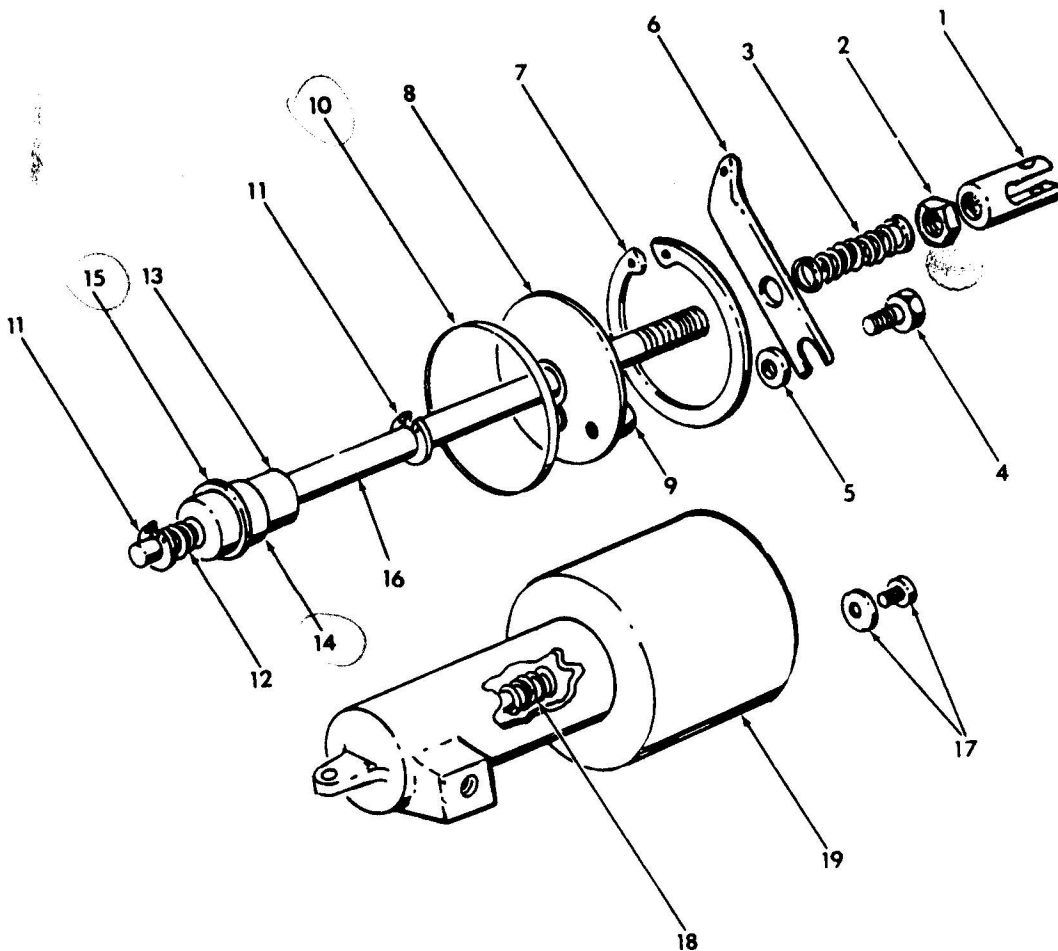
AA-5 SERIES
ILLUSTRATED PARTS CATALOG

Figure & Index No.	Part Number	Nomenclature	Units	Usable On Code
			Per Assy	
32- 12	403013-503	PARKING BRAKE INSTALLATION	NP	A
- 1	64-032-736	CONTROL (V70436)	1	
		(ATTACHING PARTS)		
- 2	AN526-832R6	SCREW	2	
	A8-75	RIVNUT (V03481)	2	
- 3	MS21919DG3	CLAMP	2	
- 4	MS21919DG2	CLAMP	1	
- 5	MS35207-269	SCREW	1	
	AN970-3	WASHER	2	
	MS20364-1032	NUT	2	
- 6	AN526-1032R16	SCREW	1	
- 7	AN316-6	NUT (NOT USED)	1	
- 8	SST-2M	TIE WRAP	1	
- 9	NT-141	NUT	1	
-10	403013-1	BRACKET	1	
-11	403013-2	CLAMP	1	
-12	FT191	WIRE STOP (V70436)	1	
-13	LE-026C-5	SPRING (V84830)	1	
-14	36T0521	CHAIN (V39428-CAT. NO. MCM36U05)	1	
	MS20995C41	SAFETY WIRE	AR	
-15	GAES201-1	SPACER	1	
		A = AA5A-0283 THRU AA5A-0522 AA53-0400 THRU AA5B-0692		

AA-5 SERIES
ILLUSTRATED PARTS CATALOG



NOTE: ITEMS 3,4,5 AND 6 ARE NOT USED
ON MASTER CYLINDER PART
NUMBER 403010-5



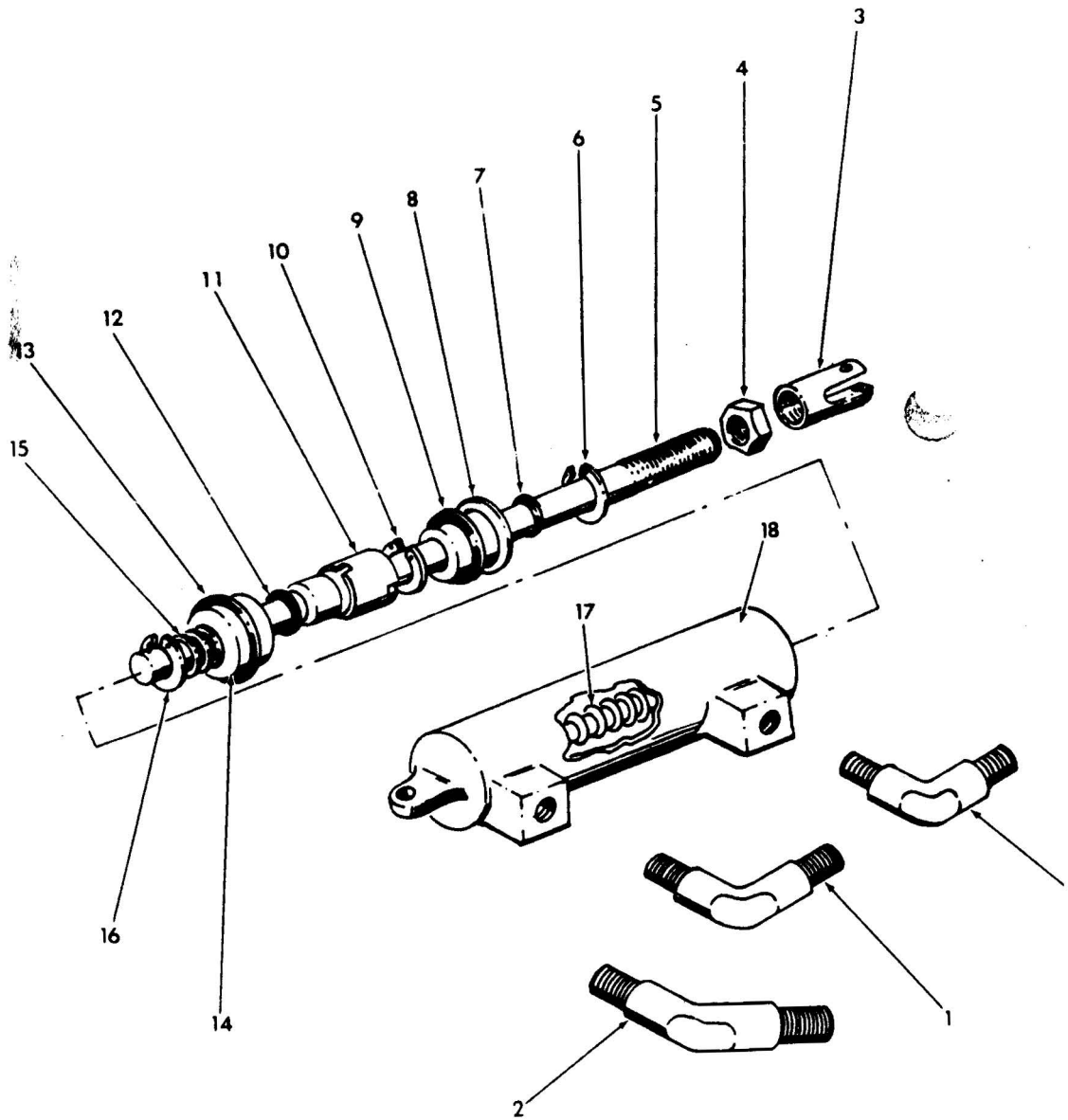
Master Cylinder
Figure 32-13

32054-13

AA-5 SERIES
ILLUSTRATED PARTS CATALOG

Figure & Index No.	Part Number	Nomenclature							Units Per Assy	Usable On Code
		1	2	3	4	5	6	7		
32- 13 - - 1 - 2 - 3 - 4 - 5 - 6 - 7 - 8 - 9 - 10 - 11 - 12 - 13 - 14 - 15 - 16 - 17 - 18 - 19	403010-1	MASTER CYLINDER (SEE FIGURE 27-5 FOR NHA)							REF	
	403010-4	MASTER CYLINDER (SEE FIGURE 27-5 FOR NHA)							REF	A
	403010-2	MASTER CYLINDER (SEE FIGURE 27-5 FOR NHA)							REF	B
	403010-5	MASTER CYLINDER (SEE FIGURE 27-5 FOR NHA)							REF	C
	A-279-A	CLEVIS (V31720)							1	
	AN316-4	NUT							1	
	A-088-A	SPRING (V31720)							1	
	AN3-5A	BOLT							1	
	A-126-A	SPACER (V31720)							1	
	A-147-A	PARKING BRAKE LEVER (V31720)							1	
	N5000-175	SNAP RING (DIXIE)							1	
	A-331-A	COVER PLATE ASSY (V31720)							1	
	A-148-A	FILLER PLUG (V31720)							1	
	TS33-30	SEAL (V31720)							1	
	X5133-21	SNAP RING (DIXIE)							2	
	A-113-A	SPRING (V31720)							1	
	A-222-A	PISTON (V31720)							1	
	AN6227-4	O-RING							1	
	AN6227-9	O-RING							1	
	A-468-A	SHAFT AND THRUST COLLAR ASSY (V31720)							1	
A-087-A	SCREW AND WASHER ASSY (V31720)							1		
A-089-A	SPRING (V31720)							1		
A-061-A	BRAKE HOUSING (V31720)							1		
		A = AA5A-0283 THRU 0522 AA5B-0400 THRU 0692								R
		B = AA5A-0523 THRU 0704 AA5B-0693 THRU 0944								R
		C = AA5A-0705 AND SUBSEQUENT AA5B-0945 AND SUBSFQUENT								R

AA-5 SERIES
ILLUSTRATED PARTS CATALOG



Master Cylinder Assembly
Figure 32-14

32G54-14

AA-5 SERIES
ILLUSTRATED PARTS CATALOG

Figure & Index No.	Part Number	Nomenclature							Units Per Assy	Usable On Code		
		1	2	3	4	5	6	7				
32- 14 -	403017-501	MASTER CYLINDER ASSY (SEE FIGURE 27-5 FOR NHA)							REF	A	R	
	403017-502	MASTER CYLINDER ASSY (SEE FIGURE 27-5 FOR NHA)							REF	A	R	
	403017-503	MASTER CYLINDER ASSY (SEE FIGURE 27-5 FOR NHA)							REF	B	R	
	403017-504	MASTER CYLINDER ASSY (SEE FIGURE 27-5 FOR NHA)							REF	B	R	
	- 1	AN822-4D	ELBOW (-502)							2		
		AN822-4D	ELBOW (-502)							1		
	- 2	AN823-4D	ELBOW (-502)							1		
		A-110-10	MASTER CYLINDER (V31720)							1	A	R
		A-110-44	MASTER CYLINDER (V31720)							1	B	R
	- 3	A-193-A	CLEVIS							1		
	- 4	AN316-5	NUT							1		
	- 5	A-137-A1	SHAFT AND THRUST COLLAR ASSY							1		
	- 6	N5000-68	SNAP RING							1		
	- 7	11-011	O-RING							1		
	- 8	A-104-A	END CAP AND BEARING							1		
	- 9	11-014	O-RING							1		
	-10	X5133-21	SNAP RING							1		
	-11	A-138-A	SPACER							1		
-12	11-008	O-RING							1			
-13	11-111	O-RING							1			
-14	A-497-A	PISTON							1			
-15	A-113-A	SPRING							1			
-16	X5133-21	SNAP RING							1			
-17	A-423-A) A323A	SPRING							1			
-18	A-658-A	HOUSING							1			
		A = AA5A-0283 THRU 0704 AA5B-0400 THRU 0944									R R	
		B = AA5A-0705 AND SUBSEQUENT AA5B-0945 AND SUBSEQUENT									R R	