

AA-5 SERIES
ILLUSTRATED PARTS CATALOG

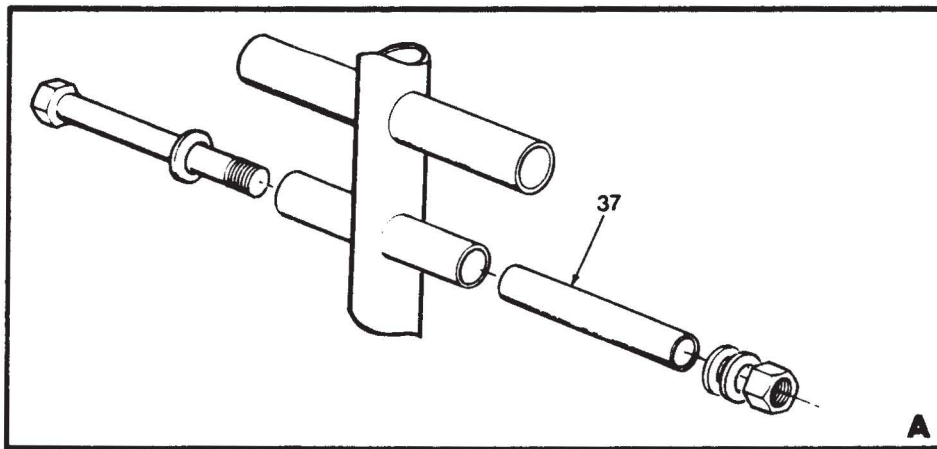
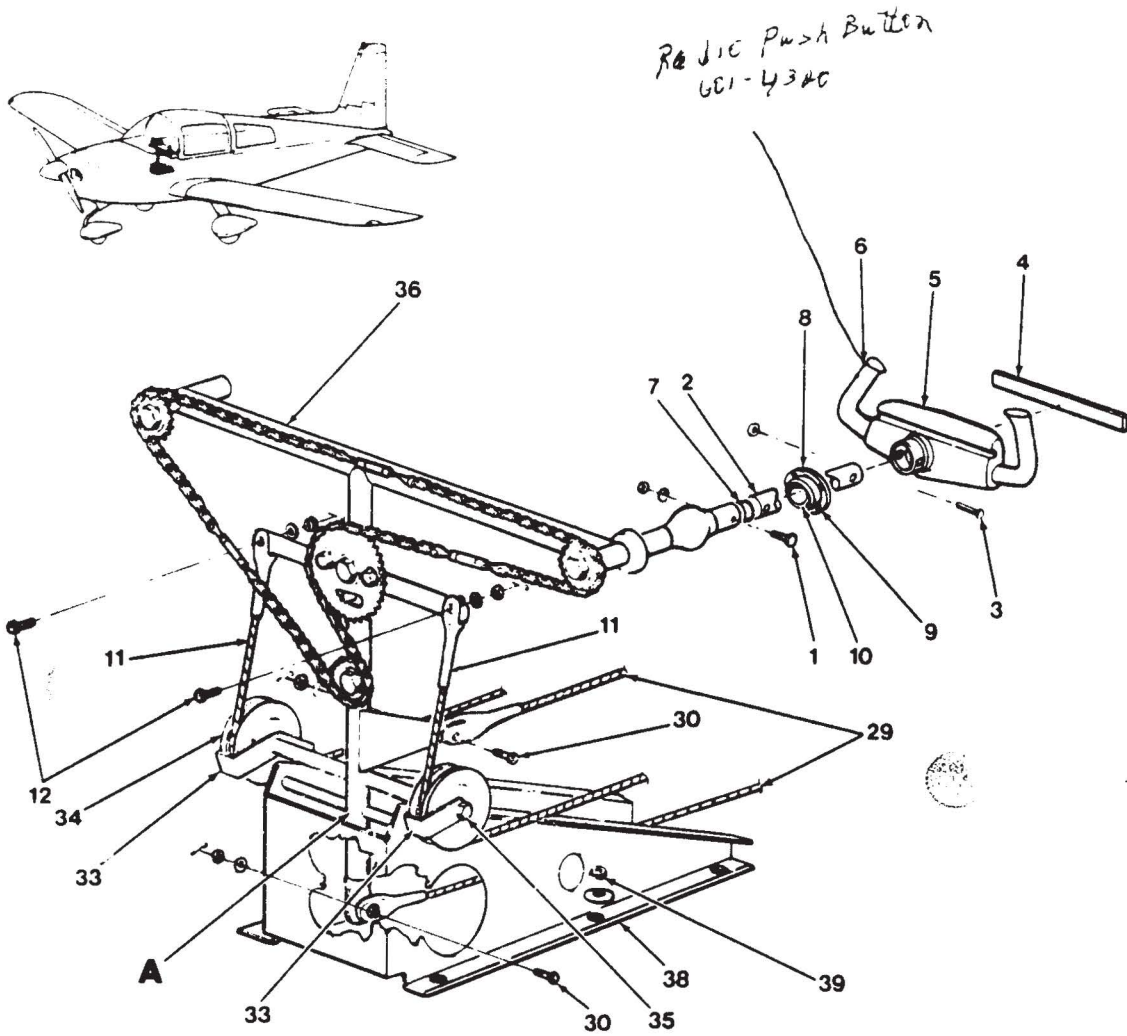
CHAPTER 27

FLIGHT CONTROLS

TABLE OF CONTENTS

<u>SUBJECT</u>	<u>FIGURE NUMBER</u>
ELEVATOR AND AILERON CONTROL INSTALLATION	27-1
COLUMN ASSEMBLY	27-2
PULLEY GROUP ASSEMBLY	27-3
CONTROL PULLEY GROUP ASSEMBLY	27-4
RUDDER AND BRAKE CONTROL INSTALLATION	27-5
FLAP CONTROL INSTALLATION	27-6
TRIM CONTROL INSTALLATION	27-7
TRIM AND FLAP CONTROL ASSEMBLY	27-8

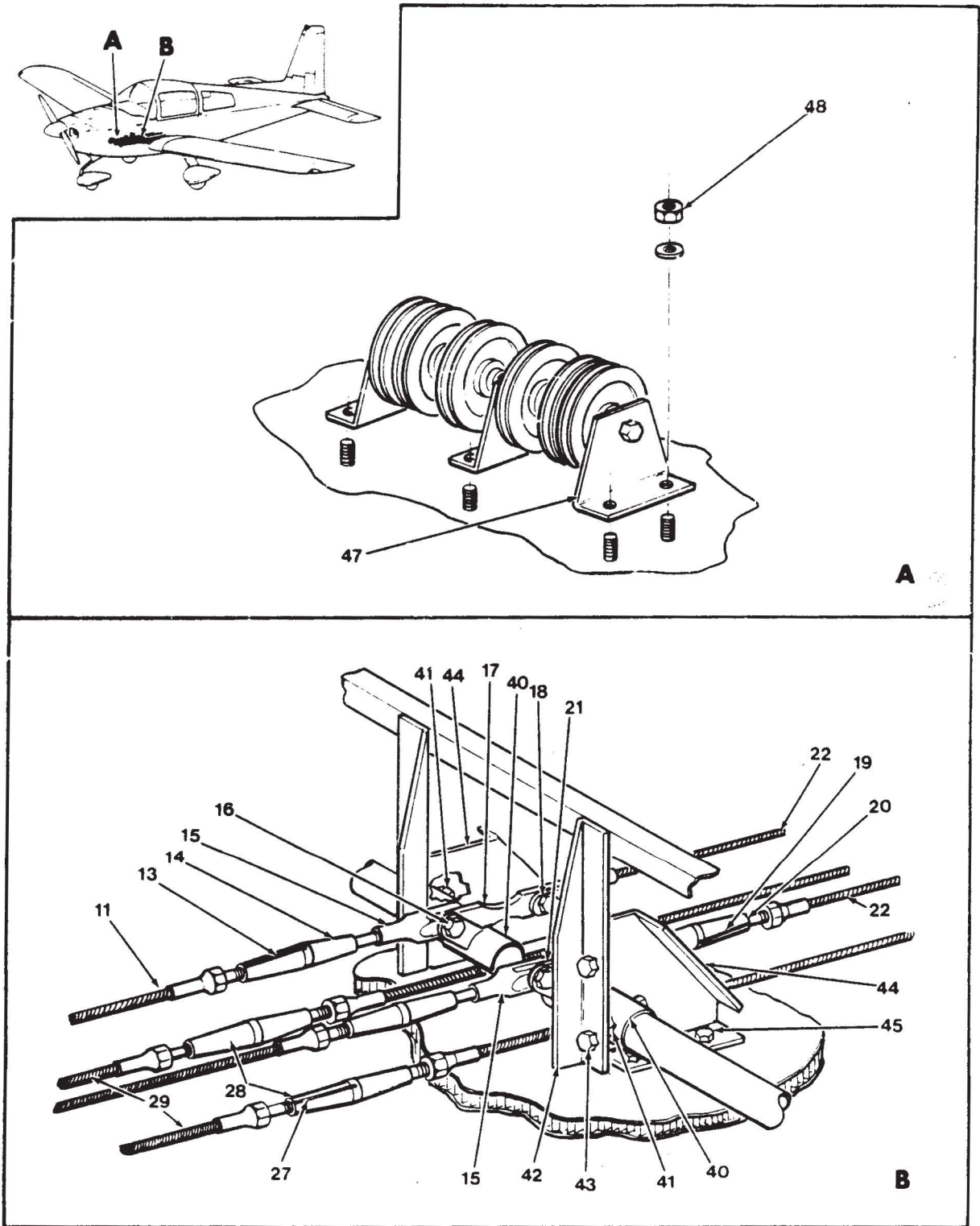
AA-5 SERIES
ILLUSTRATED PARTS CATALOG



Elevator and Aileron Control Installation
Figure 27-1 (Sheet 1 of 3)

27G54-1-1

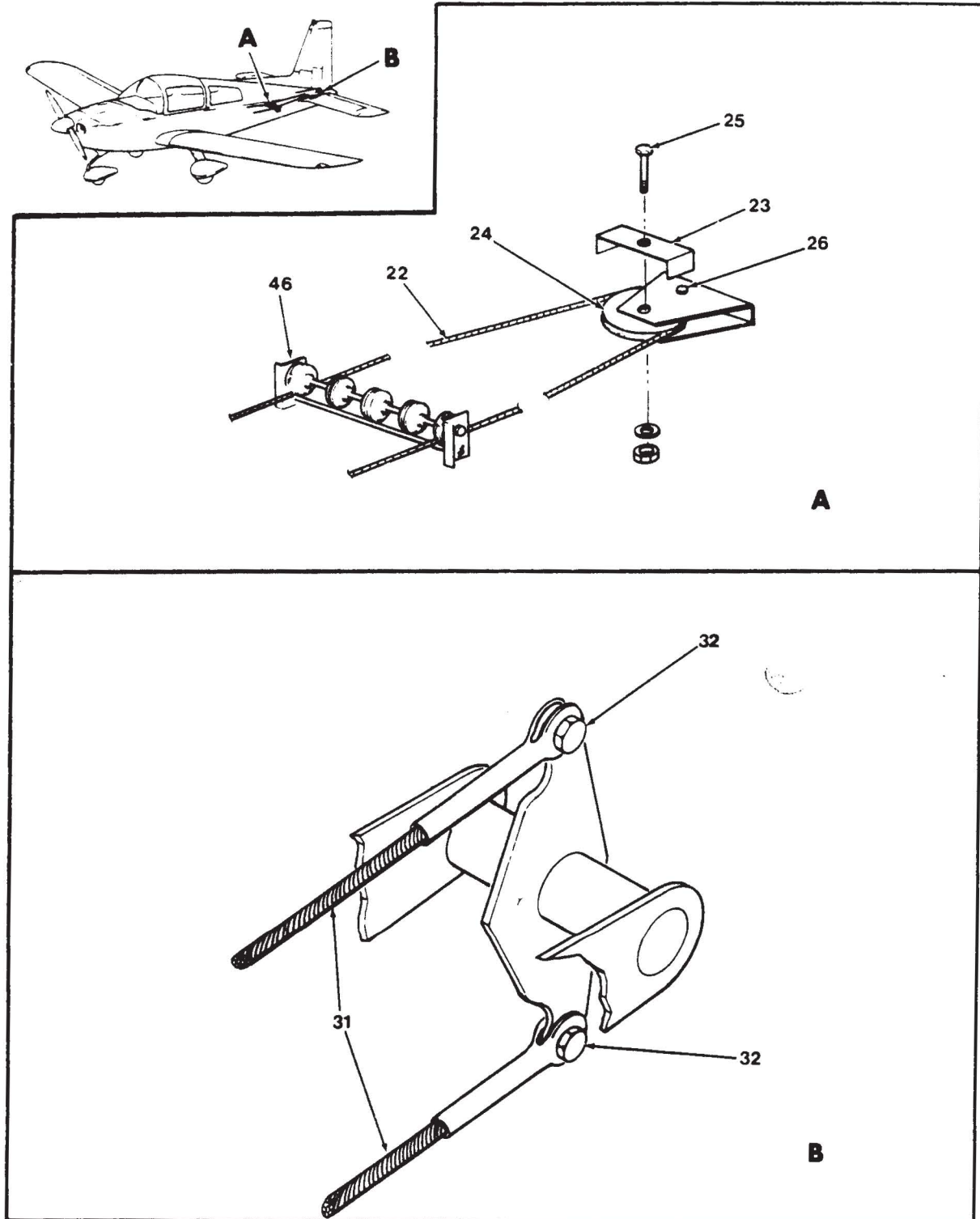
AA-5 SERIES
ILLUSTRATED PARTS CATALOG



Elevator and Aileron Control Installation
Figure 27-1 (Sheet 2 of 3)

27G54-1-2

AA-5 SERIES
ILLUSTRATED PARTS CATALOG



27G54-1-3

Elevator and Aileron Control Installation
Figure 27-1 (Sheet 3 of 3)

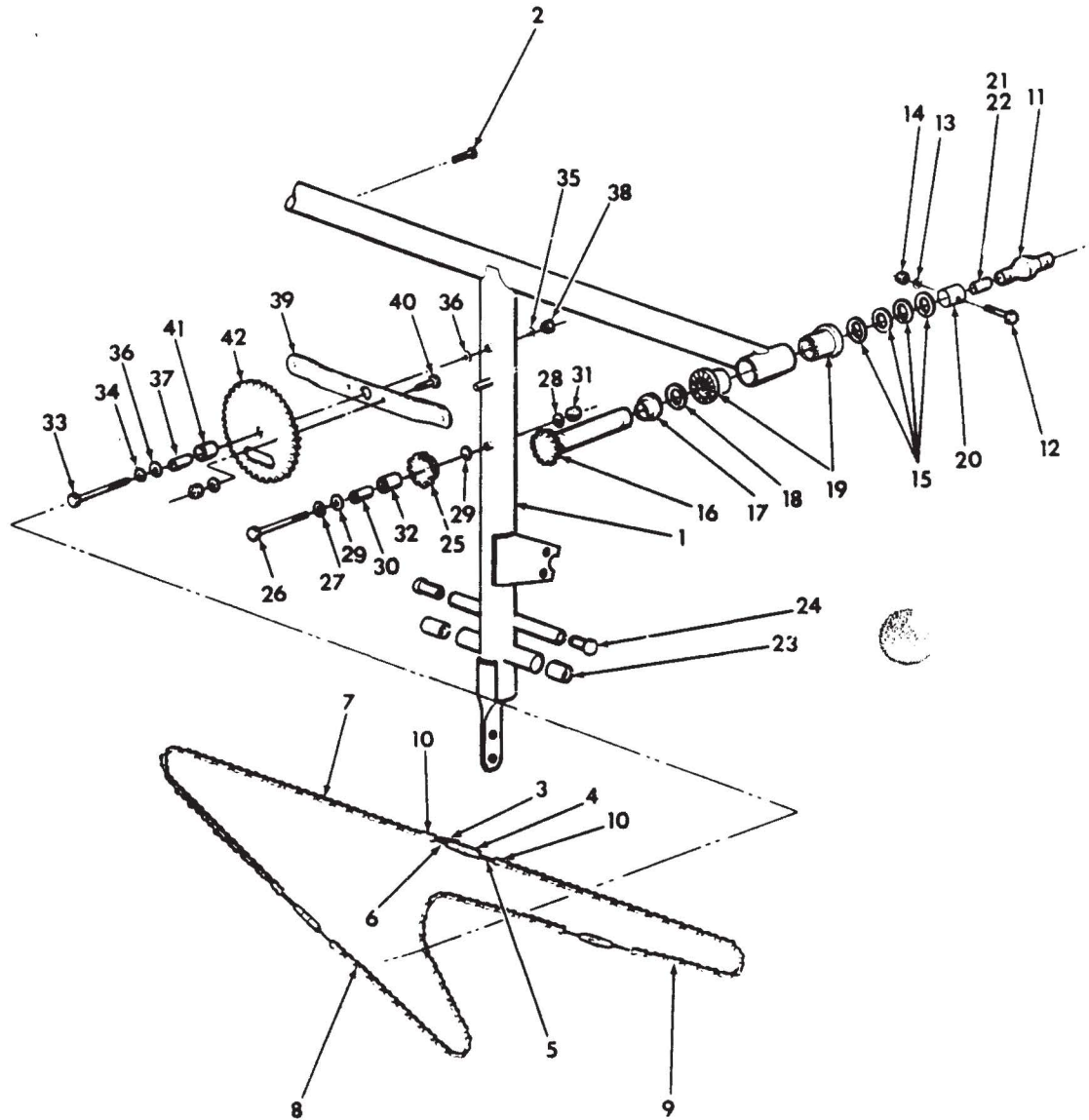
AA-5 SERIES
ILLUSTRATED PARTS CATALOG

Figure & Index No.	Part Number	Nomenclature	Units Per Assy	Usable On Code	
				1 2 3 4 5 6 7	
27- 1 -	5600008-503	ELEVATOR AND AILERON CONTROL INSTALLATION (STD)	NP		
	5600008-504	ELEVATOR AND AILERON CONTROL INSTALLATION (OPT)	AR		
	5602113-502	CONTROL WHEEL ASSY (STD)	1		
	5602113-502	CONTROL WHEEL ASSY (OPT)	2		
		(ATTACHING PARTS)			
- 1	NAS464P4A13	BOLT	1		
	AN960-416	WASHER	1		
	MS20365-428	NUT	1		
- 2	5602109-1	SHAFT	1		
		(ATTACHING PARTS)			
- 3	602113-1	RIVET	1		
	AN960-10	WASHER	1		
- 4	5803008-1	NAMEPLATE	1		
	5803012-1	INSERT - CHEETAH (OPTIONAL)	1	A	R
	5803012-3	INSERT - TIGER (OPTIONAL)	1	B	R
- 5	5602110-1	COVER	1		
- 6	5602103-1	WHEEL	1		
- 7	602104-5	SPACER (STD)	1		
	602104-5	SPACER (OPT)	2		
- 8	602116-1	CUP, BEARING	1		
		(ATTACHING PARTS)			
- 9	MS20470AD4-5	RIVET	4		
-10	602117-501	BEARING ASSY	1		
-11	5602107-509	CABLE ASSY	2		
		(ATTACHING PARTS)			
-12	AN23-11	BOLT	1		
	AN960-10	WASHER	1		
	AN320-3	NUT	1		
	MS24665-132	COTTER PIN	1		
-13	MS21256-1	CLIP, LOCKING	4		
-14	MS21251B5S	TURNBUCKLE BARREL	2		
-15	MS21252-5LS	CLEVIS END	2		
		(ATTACHING PARTS)			
-16	AN24-15	BOLT	1		
	AN960-416	WASHER	1		
	AN320-4	NUT	1		
	MS24665-132	COTTER PIN	1		
-17	5603074-2	LINK	1		
		(ATTACHING PARTS)			
-18	AN23-11	BOLT	1		
	AN960-10	WASHER	1		
	AN320-3	NUT	1		
	MS24665-132	COTTER PIN	1		
-19	MS21256-2	CLIP, LOCKING	2		
-20	MS21251B5L	TURNBUCKLE BARREL	1		
-21	MS21254-5RL	EYE END	1		
-22	5602107-511	CABLE ASSY	1		
-23	603071-1	GUARD	1		
-24	MS20220-3	PULLEY	1		
		(ATTACHING PARTS FOR INDEX NUMBERS -23 AND -24)			
-25	AN5-12A	BOLT	1		
	AN960-516	WASHER	1		
	MS20364-524	NUT	1		
-26	MS20392-1C23	CLEVIS PIN	1		
	MS24665-132	COTTER PIN	1		
-27	MS21256-2	CLIP, LOCKING	4		
-28	MS21251B5L	TURNBUCKLE BARREL	2		

AA-5 SERIES
ILLUSTRATED PARTS CATALOG

Figure & Index No.	Part Number	Nomenclature	Units	Usable
			Per Assy	On Code
27- 1	-29	5602107-507 CABLE ASSY (ATTACHING PARTS)	2	
	-30	AN23-11 AN960-10 AN320-3 MS24665-132 BOLT WASHER NUT COTTER PIN	1 1 1 1	
	-31	5602107-510 CABLE ASSY (ATTACHING PARTS)	2	
	-32	AN23-11 AN960-10 AN320-3 MS24665-132 BOLT WASHER NUT COTTER PIN	1 1 1 1	
	-33	5603016-1 GUARD	2	
	-34	MS20220-2 PULLEY (ATTACHING PARTS FOR INDEX NUMBERS -33 AND -34)	2	
	-35	AN5-67A AN960-516 MS20365-524 BOLT WASHER NUT	1 1 1	
	-36	5602104-503 5602104-504 COLUMN ASSY (STD) (SEE FIGURE 27-2 FOR DETAIL BREAKDOWN) COLUMN ASSY (OPT) (SEE FIGURE 27-2 FOR DETAIL BREAKDOWN) (ATTACHING PARTS)	1 AR	
	-37	AN5-37A AN960-516L 602106-1 MS20364-524 BOLT WASHER SLEEVE NUT	1 3 1 1	
	-38	602103-501 SUPPORT ASSY (ATTACHING PARTS)	1	
	-39	MS20365-428 AN960-416 NUT WASHER	6 6	
	-40	603076-502 AILERON HORN ASSY (ATTACHING PARTS)	2	
	-41	AN174-15A AN960-416 MS20364-428 BOLT WASHER NUT	1 2 1	
	-42	5102336-5 5102336-4 ANGLE (LH) ANGLE (RH) (ATTACHING PARTS)	1 1	
	-43	AN3-4A AN960-10 MS20365-1032 BOLT WASHER NUT	2 2 2	
	-44	5603075-501 5603075-502 SUPPORT BEARING ASSY (LH) SUPPORT BEARING ASSY (RH) (ATTACHING PARTS)	1 1	
	-45	MS20365-1032 AN960-10 NUT WASHER	2 2	
	-46	5600009-501 PULLEY GROUP ASSY (SEE FIGURE 27-3 FOR DETAIL BREAKDOWN)	REF	
	-47	600009-502 CONTROL PULLEY GROUP ASSY (SEE FIGURE 27-4 FOR DETAIL BREAKDOWN) (ATTACHING PARTS)	1	
	-48	MS20365-1032 AN960-10 NUT WASHERS	6 6	
A = AA5A-0523 AND SUBSEQUENT				
B = AA5B-0693 AND SUBSEQUENT				

AA-5 SERIES
ILLUSTRATED PARTS CATALOG



27G54-2

Column Assembly
Figure 27-2

AA-5 SERIES
ILLUSTRATED PARTS CATALOG

Figure & Index No.	Part Number	Nomenclature							Units Per Assy	Usable On Code	
		1	2	3	4	5	6	7			
27- 2	-	5602104-503	COLUMN ASSY (STD) (SEE FIGURE 27-1 FOR NHA)							REF	
		5602104-504	COLUMN ASSY (OPT) (SEE FIGURE 27-1 FOR NHA)							REF	
- 1		5602102-502	T-COLUMN ASSY							1	
- 2		AN535-2-2	SCREW							1	
- 3		MS21251B3S	CLIP							6	
- 4		MS2151B5S	TURNBUCKLE							3	
- 5		8-04039-35LH	TURNBUCKLE EYE							3	
- 6		8-04039-35RH	TURNBUCKLE EYE							3	
- 7		5602104-1	CHAIN							1	
- 8		5602104-7	CHAIN							1	
- 9		5602104-1	CHAIN							1	
-10		ASA STD NO. 35	CONNECTING LINK							6	
-11		MS20271B10	UNIVERSAL JOINT (STD)							1	
		MS20271B10	UNIVERSAL JOINT (OPT)							AR	
			(ATTACHING PARTS)								
-12		NAS464P4A15	BOLT							1	
-13		AN960-416	WASHER							1	
-14		MS20365-428	NUT							1	

-15		602104-6	SHIM							AR	
-16		5603069-501	SPROCKET ASSY							2	
-17		5603069-2	SPACER							2	
-18		PL18-30	THRUST PLATE (V26124)							4	
-19		RAX718	THRUST BEARING (V26124)							4	
-20		5602104-4	COLLAR							2	
-21		5602104-5	SPACER (STD)							1	
-22		602104-5	SPACER (OPT)							2	
-23		B-710	NEEDLE BEARING (V60380)							2	
-24		5602104-3	BUSHING							2	
-25		5603070-502	SPROCKET ASSY							1	
			(ATTACHING PARTS)								
-26		AN5-27A	BOLT							1	
-27		AN960-516	WASHER							1	
-28		AN360-516L	WASHER							1	
-29		602104-4	WASHER							2	
-30		602104-3	SLEEVE							1	
-31		MS20364-524	NUT							1	

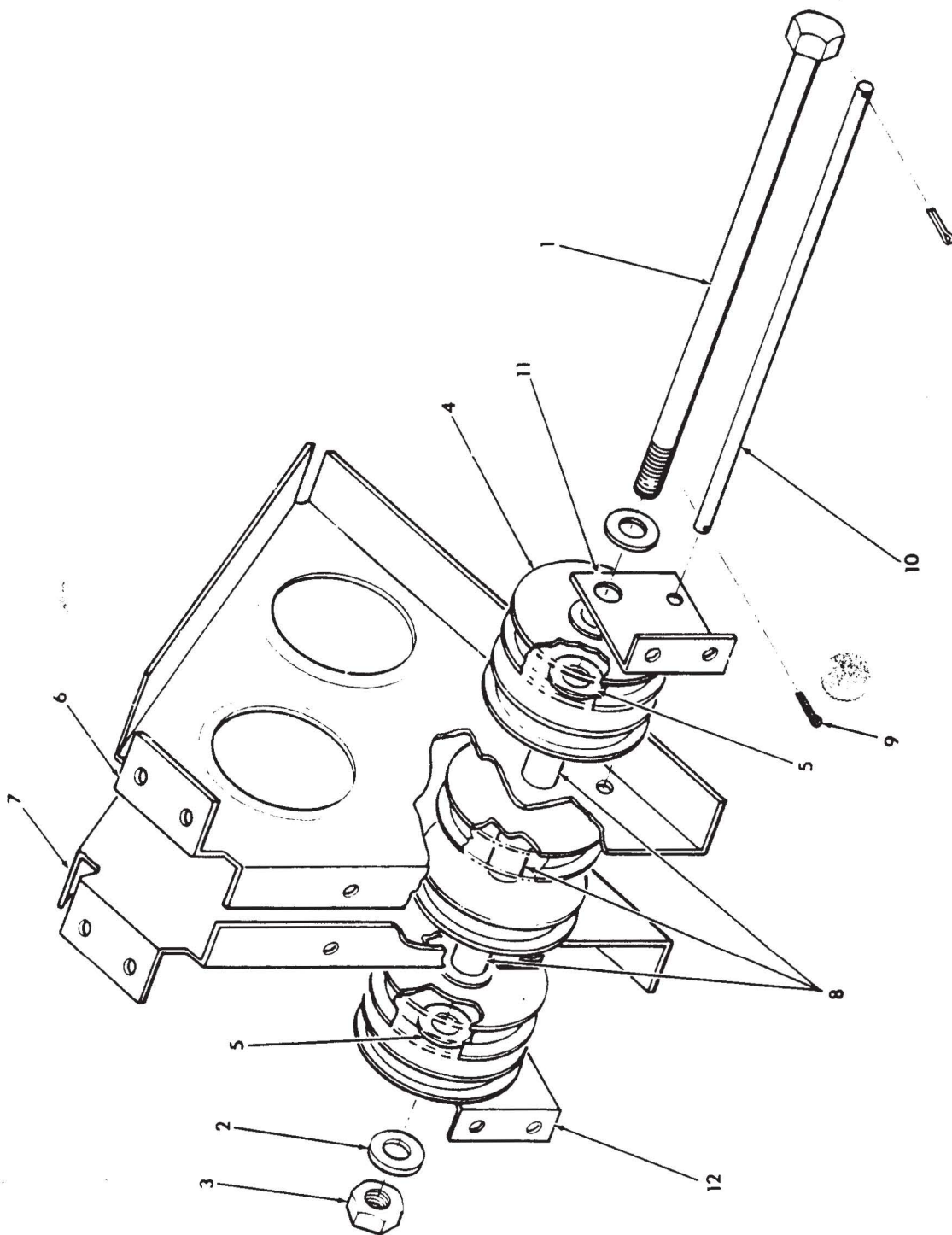
-32		B-710	NEEDLE BEARING							1	
		5603070-501	SPROCKET ASSY							1	
			(ATTACHING PARTS)								
-33		AN5-27A	BOLT							1	
-34		AN960-516L	WASHER							1	
-35		AN960-516	WASHER							1	
-36		602104-4	WASHER							2	
-37		602104-3	SLEEVE							1	
-38		MS20364-524	NUT							1	

-39		5603070-1	BELLCRANK							1	
			(ATTACHING PARTS)								
-40		AN10-3A	BOLT							2	
		AN960-10	WASHER							2	
		MS20364-1032	NUT							2	

-41		B-710	NEEDLE BEARING							1	
-42		5603068-2	SPROCKET							1	

R

AA-5 SERIES
ILLUSTRATED PARTS CATALOG



27G54 3 1

Pulley Group Assembly
Figure 27-3

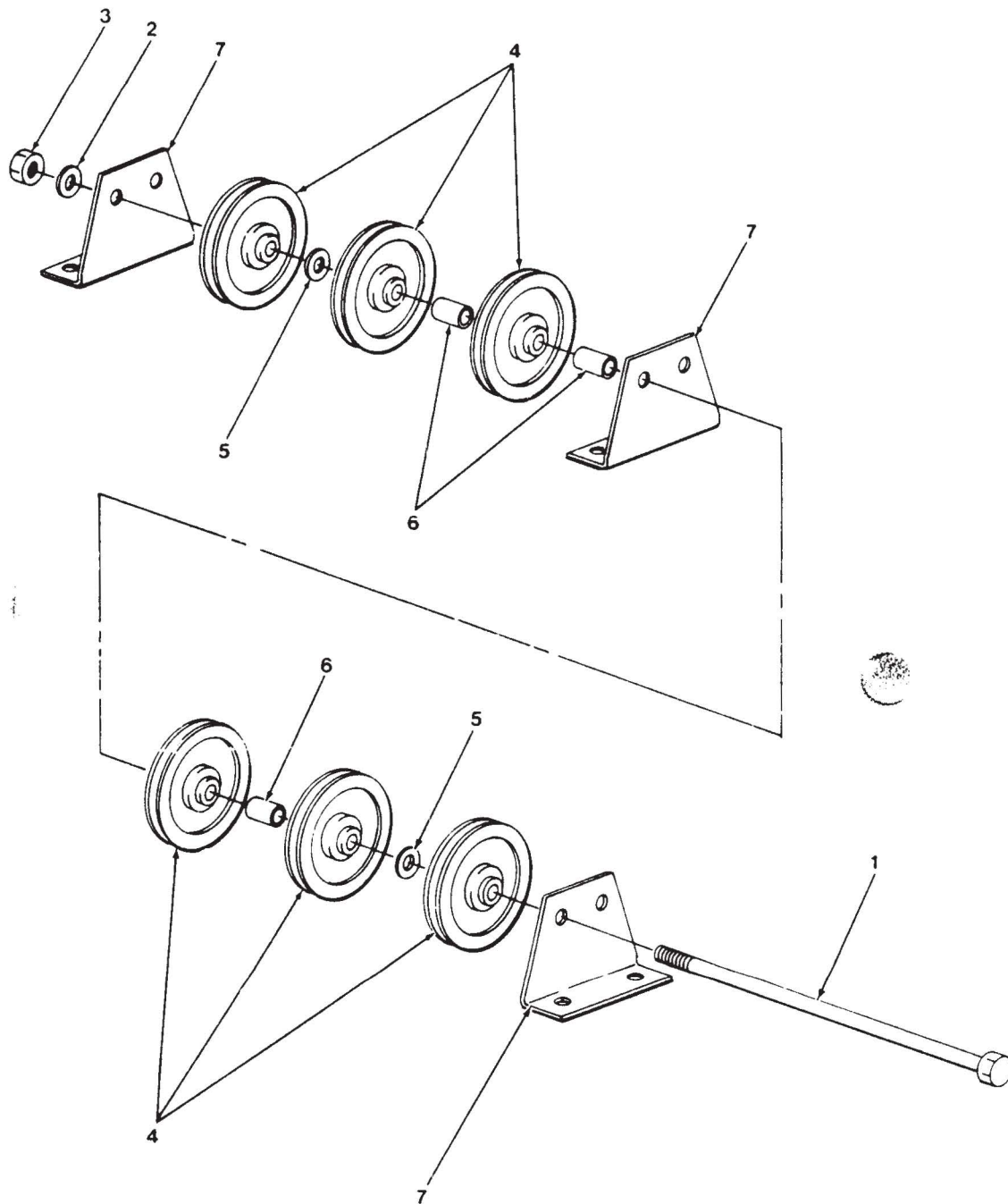
27
Page 10
April 15/77

Provided by the AYA - www.aya.org as a service to its members.
For the latest version or printed copies of this manual contact Fletcher Aviation on (800) 329 4647

AA-5 SERIES
ILLUSTRATED PARTS CATALOG

Figure & Index No.	Part Number	Nomenclature							Units Per Assy	Usable On Code
		1	2	3	4	5	6	7		
27- 3	5600009-501	P	NP	
- 1	AN5-72A	.	B	1	
- 2	AN960-516	.	W	1	
- 3	MS20364-524	.	N	1	
- 4	MS20220-2	.	P	6	
- 5	AN960-516L	.	W	2	
- 6	5102312-1	.	B	1	
- 7	5102312-2	.	B	1	
- 8	601044-1	.	S	1	
- 9	MS24665-67	.	C	2	
-10	5600009-3	.	G	1	
-11	5600009-1	.	B	1	
-12	5600009-2	.	B	1	

AA-5 SERIES
ILLUSTRATED PARTS CATALOG



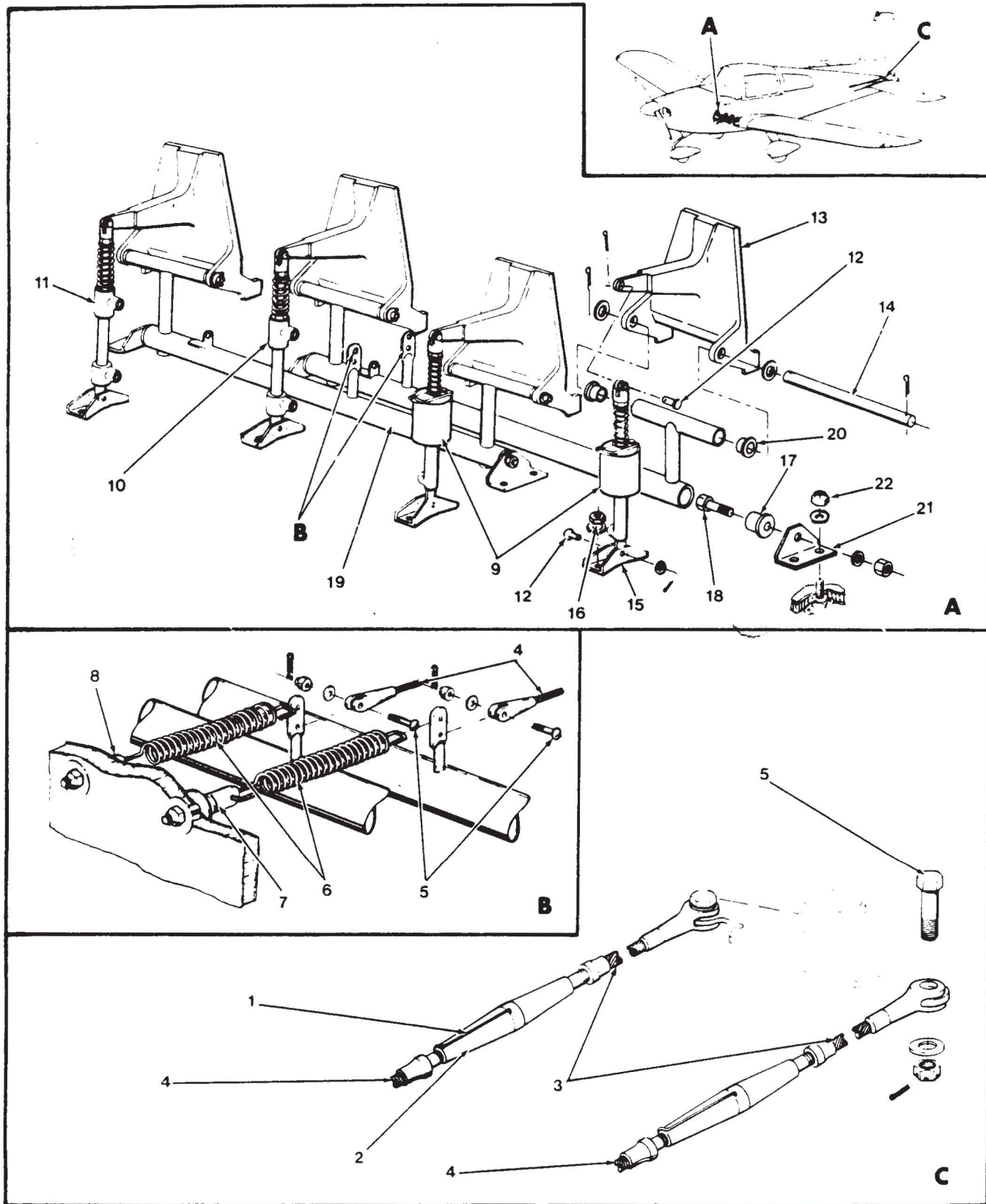
27G54-4 1

Control Pulley Group Assembly
Figure 27-4

AA-5 SERIES
ILLUSTRATED PARTS CATALOG

Figure & Index No.	Part Number	Nomenclature							Units Per Assy	Usable On Code	
		1	2	3	4	5	6	7			
27- 4	-	600009-502	CONTROL PULLEY GROUP ASSY (SEE FIGURE 27-1 FOR NHA)							1	
	- 1	AN5-72A	. BOLT							1	
	- 2	AN960-516	. WASHER							1	
	- 3	MS20364-524	. NUT							1	
	- 4	MS20220-2	. PULLEY							6	
	- 5	AN960-516L	. WASHER							2	
	- 6	601044-1	. SPACER							3	
	- 7	601054-1	. BRACKET							3	

AA-5 SERIES
ILLUSTRATED PARTS CATALOG



27G54-5-1

Rudder and Brake Control Installation
Figure 27-5

AA-5 SERIES
ILLUSTRATED PARTS CATALOG

Figure & Index No.	Part Number	Nomenclature							Units Per Assy	Usable On Code	
		1	2	3	4	5	6	7		A	B
27- 5	5600007-503	RUDDER AND BRAKE CONTROL INSTALLATION (STD)							NP		
	5600007-504	RUDDER AND BRAKE CONTROL INSTALLATION (OPT)							AR	A	R
	5600007-505	RUDDER AND BRAKE CONTROL INSTALLATION (OPT)							AR	B	R
- 1	MS21256-2	LOCKING CLIP							4		
- 2	MS21251B5L	TURNBUCKLE BODY							2		
- 3	5602107-506	RUDDER CABLE ASSY							2		
- 4	5602107-505	RUDDER CABLE ASSY (ATTACHING PARTS FOR ITEMS 3 THROUGH 4)							2		
- 5	AN23-11	BOLT							1		
	AN960-10	WASHER							1		
	AN320-3	NUT							1		
	MS24665-132	COTTER PIN							1		
- 6	601053-2	SPRING							2		
- 7	AN438-12A	BOLT							1		
	AN960-416	WASHER							5		
	901035-1	WASHER							1		
	902015-1	BUSHING							1		
	MS20365-428	NUT							1		
- 8	AN438-7A	BOLT							1		
	901035-1	WASHER							1		
	902015-1	BUSHING							1		
	MS20364-428	NUT							1		
- 9	403010-1	MASTER CYLINDER (STD) (SEE FIGURE 32-13 FOR DETAIL BREAKDOWN.)							2		
	403010-4	MASTER CYLINDER (OPT) (SEE FIGURE 32-13 FOR DETAIL BREAKDOWN.)							2	A	R
	403010-2	MASTER CYLINDER (OPT) (SEE FIGURE 32-13 FOR DETAIL BREAKDOWN.)							2	E	R
	403010-5	MASTER CYLINDER (OPT) (SEE FIGURE 32-13 FOR DETAIL BREAKDOWN.)							2	D	R
-10	403017-501	MASTER CYLINDER ASSY (OPT) (SEE FIGURE 32-14 FOR DETAIL BREAKDOWN.)							1	C	R
	403017-503	MASTER CYLINDER ASSY (OPT) (SEE FIGURE 32-14 FOR DETAIL BREAKDOWN.) (OPT)							1	D	R
-11	403017-502	MASTER CYLINDER ASSY (OPT) (SEE FIGURE 32-14 FOR DETAIL BREAKDOWN.)							1	C	R
	403017-504	MASTER CYLINDER ASSY (OPT) (SEE FIGURE 32-14 FOR DETAIL BREAKDOWN.) (OPT) (ATTACHING PARTS FOR ITEMS 9 THROUGH 11)							1	D	R
-12	MS20392-2C17	CLEVIS PIN							2		
	AN960-10L	WASHER							2		
	MS24665-132	COTTER PIN							2		
-13	606001-1	PEDAL (STD)							2		
	606001-1	PEDAL (OPT) (ATTACHING PARTS)							4		
-14	601021-1	TUBE							1		
	AN960-416	WASHER							2		
	MS24665-132	COTTER PIN							2		
-15	601052-1	BRACKET (ATTACHING PARTS)							2		
-16	MS20365-1032	NUT							2		
	AN960-10	WASHER							2		
-17	601029-1	BEARING (ATTACHING PARTS)							4		
-18	AN4-11A	BOLT							1		
	AN960-416	WASHER							1		
	MS20365-428	NUT							1		

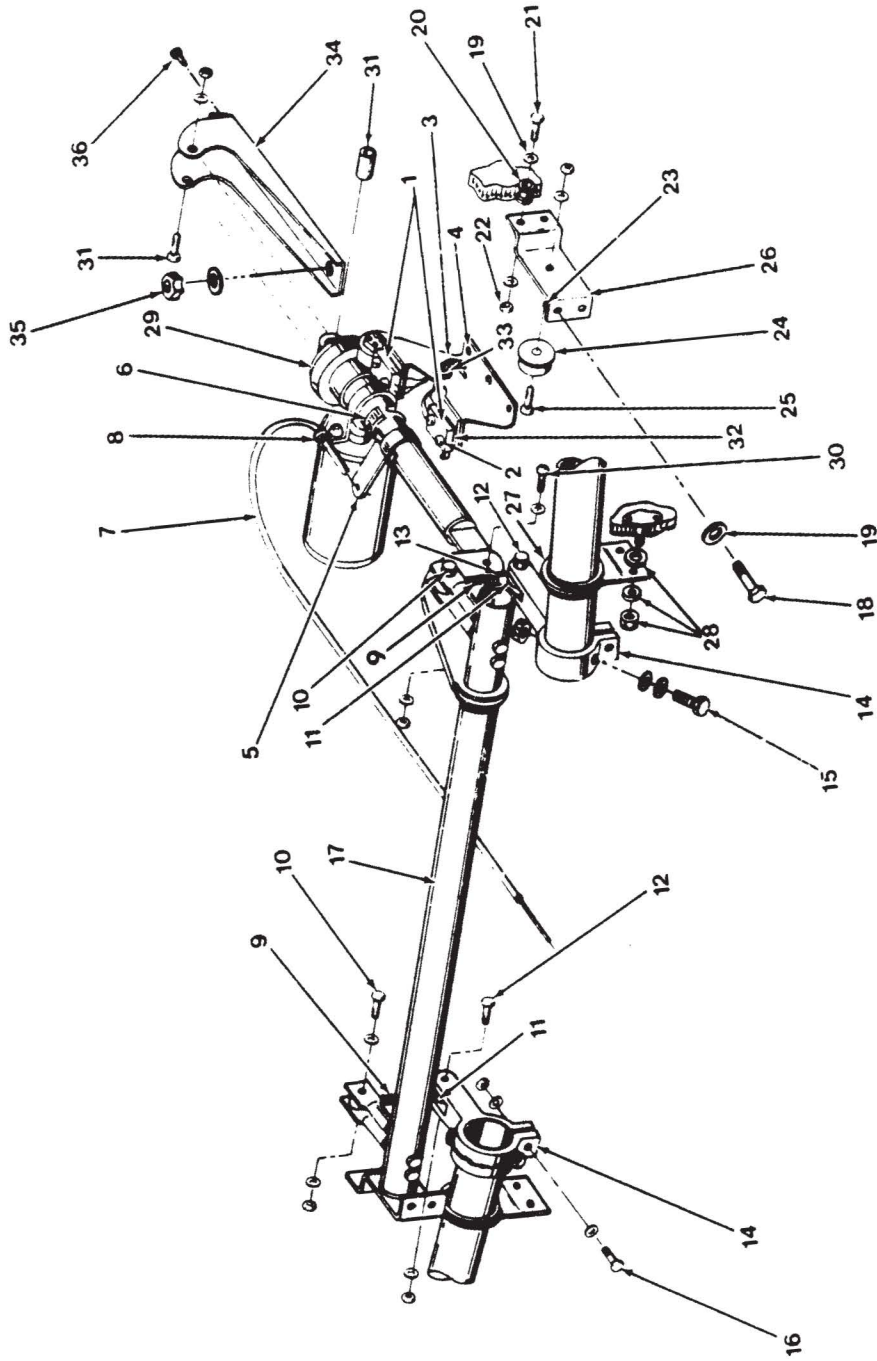
AA-5 SERIES
ILLUSTRATED PARTS CATALOG

Figure & Index No.	Part Number	Nomenclature	Units Per Assy	Usable On Code	
		1 2 3 4 5 6 7			
27- 5	-19	601031-501 . BAR ASSY	2		
	-20	601051-1 . PLUG	4		
	-21	601049-1 . BRACKET	4		
		(ATTACHING PARTS)			
	-22	MS20365-1032 . NUT	2		
		^N960-10 . WASHER	2		

		A = AA5A-0283 THRU 0522 AA5B-0400 THRU 0692			
		B = AA5A-0523 AND SUBSEQUENT AA5B-0693 AND SUBSEQUENT			
		C = AA5A-0283 THRU 0704 AA5B-0693 AND SUBSEQUENT			
	D = AA5A-0400 THRU 0944 AA5B-0945 AND SUBSEQUENT				
	E = AA5A-0523 THRU 0704 AA5B-0693 THRU 0904				

R
R
R
R
R
R
R
R

AA-5 SERIES
ILLUSTRATED PARTS CATALOG



27G54-6-1

Flap Control Installation
Figure 27-6

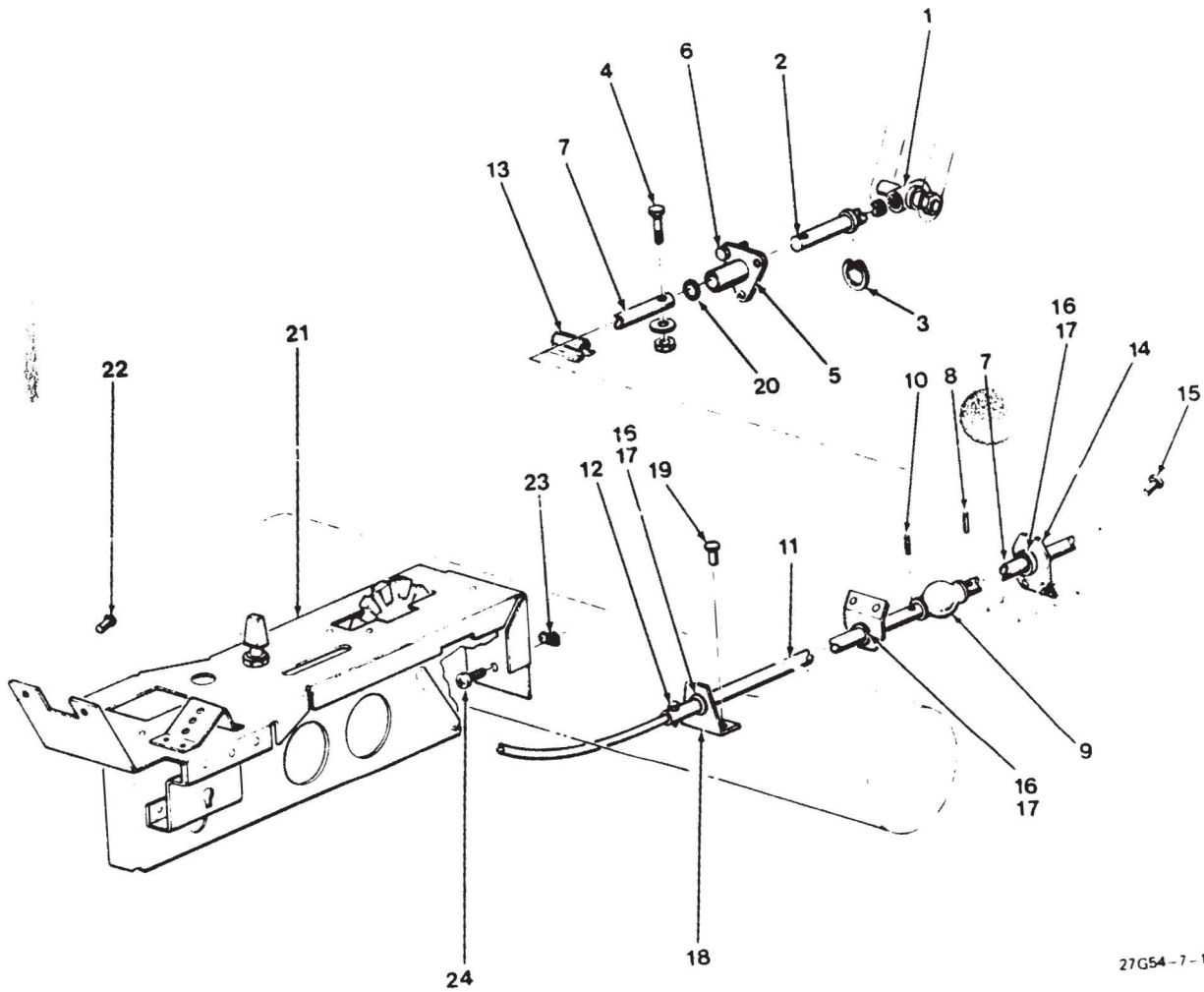
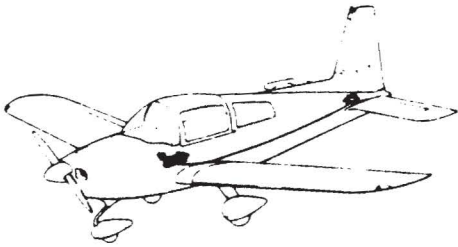
AA-5 SERIES
ILLUSTRATED PARTS CATALOG

Figure & Index No.	Part Number	Nomenclature 1 2 3 4 5 6 7	Units	Usable
			Per Assy	On Code
27-6	5604001-502 5607015-502	FLAP CONTROL INSTALLATION CONTROL ASSY, TRIM AND FLAP (SEE FIGURE 27-7 FOR NHA)	NP REF	
-1	4604-1100	SWITCH (MCGILL) (ATTACHING PARTS)	2	
-2	MS35206-219 AN960-4 MS20365-440	SCREW WASHER NUT	2 4 2	
-3	5607017-7	BRACKET (ATTACHING PARTS)	1	
-4	1601-0410	RIVET (V19738)	3	
-5	5607017-4	ARM	1	
-6	QS100M12S	CLAMP (F.B. WRIGHT)	1	
-7	5607017-501	CABLE ASSY, FLAP CONTROL INDICATOR	REF	
-8	MS21919DG3	CLAMP	1	
-9	GAES501-2	ROD END (ATTACHING PARTS)	2	
-10	AN4-11A AN960-416 MS20365-428	BOLT WASHER NUT	1 1 1	
-11	GAES500-1	ROD END (ATTACHING PARTS)	2	
-12	AN4-12A AN960-416 MS20365-428	BOLT WASHER NUT	1 1 1	
-13	AN316-4	NUT	2	
-14	5604005-501	ARM ASSY, FLAP DRIVE (ATTACHING PARTS)	2	
-15	5901005-2 AN960-416L	DRIVE BOLT WASHER	2 AR	
-16	AN4-10A AN960-416L MS20365-428	BOLT WASHER NUT	1 2 1	
-17	5604008-503 5604007-501	TUBE ASSY, FLAP DRIVE BEARING ASSY, FLAP DRIVE TUBE (ATTACHING PARTS)	2 2	
-18	AN3-3A	BOLT	2	
-19	AN960-10	WASHER	6	
-20	GAES201-1	SPACER	2	
-21	AN3-10A	BOLT	2	
-22	MS20365-1032	NUT	2	
-23	K7000-3-6	NUT (V31174)	2	
-24	601029-1	BEARING (ATTACHING PARTS)	1	
-25	AN4-11A AN960-416 MS20364-428	BOLT WASHER NUT	1 1 1	
-26	5604007-2	BRACKET	1	
-27	5604006-501 (→03)	BEARING ASSY, FLAP TORQUE TUBE (ATTACHING PARTS)	2	
-28	AN960-10 MS20365-1032	WASHER NUT	2 2	
	604058-1	SHIM	1	R

AA-5 SERIES
ILLUSTRATED PARTS CATALOG

Figure & Index No.	Part Number	Nomenclature							Units Per Assy	Usable On Code	
		1	2	3	4	5	6	7			
27- 6	-29	5604011-501	.	ACTUATOR ASSY	1	
			.	(ATTACHING PARTS)		
	-30	AN24-15	.	CLEVIS BOLT	1	
		AN960-416	.	WASHER	2	
		AN320-4	.	NUT	1	
		MS24665-132	.	COTTER PIN	1	
	-31	AN3-14A	.	BOLT	1	
		AN960-10	.	WASHER	1	
		5604009-2	.	SLEEVE	1	
		MS20365-1032	.	NUT	1	
	-32	5607017-8	.	PAD	2	
	-33	MS35490-6	.	GROMMET	2	
	-34	5604009-501	.	BRACKET ASSY	1	
			.	(ATTACHING PARTS)		
	-35	AN960-10	.	WASHER	2	
		MS20364-1032	.	NUT	2	
	-36	NAS139884-2	.	RIVET	2	
		5604001-1	.	SHIM	AR	

AA-5 SERIES
ILLUSTRATED PARTS CATALOG



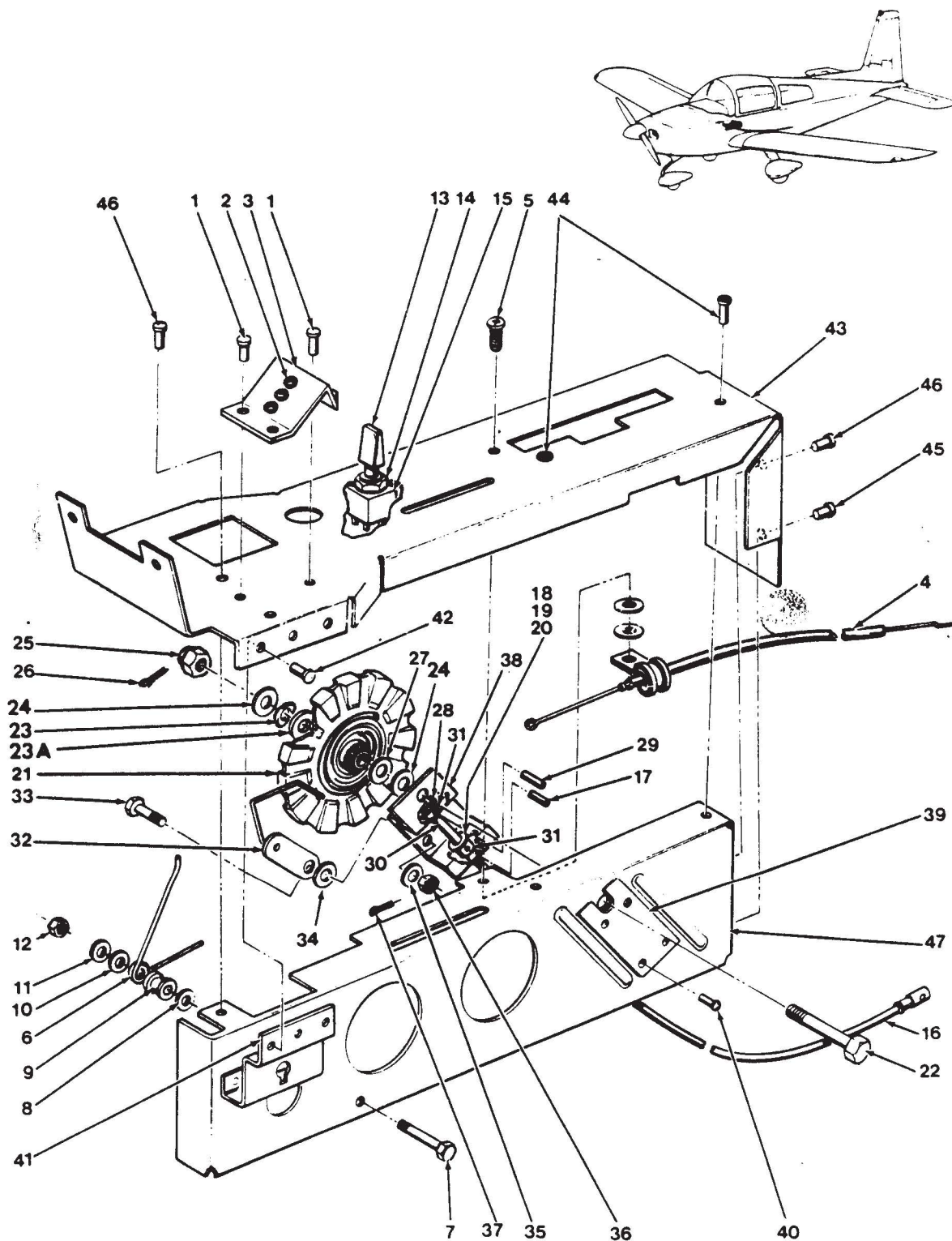
27G54-7-1

Trim Control Installation
Figure 27-7

AA-5 SERIES
ILLUSTRATED PARTS CATALOG

Figure & Index No.	Part Number	Nomenclature 1 2 3 4 5 6 7	Units	Usable
			Per Assy	On Code
27- 7	-	TRIM CONTROL INSTALLATION	NP	
- 1	5607001-502 5302053-502	ACTUATOR ASSY (SEE FIGURE 55-3 FOR INSTALLATION.)	REF	
- 2	607003-9	SHAFT (ATTACHING PARTS)	1	
- 3	5144-37MD	RETAINER	1	
- 4	AN3-7A	BOLT	1	
	AN960-10	WASHER	1	
	MS20364-1032	NUT	1	
- 5	5607003-501	CARRIER ASSY (ATTACHING PARTS)	1	
- 6	AN3-4A	BOLT	3	
	AN960-10	WASHER	3	
	MS20364-1C32	NUT	3	
- 7	5607001-2	TORQUE TUBE (ATTACHING PARTS)	1	
- 8	52-028-125-0625 MS20995C32	ROLL PIN (ESNA) SAFETY WIRE	1 AR	
- 9	MS20271B6	UNIVERSAL JOINT (ATTACHING PARTS)	1	
-10	52-028-125-0625 MS20995C32	ROLL PIN (ESNA) SAFETY WIRE	1 AR	
-11	5607001-1	TORQUE TUBE (ATTACHING PARTS)	1	
-12	AN3-7A	BOLT	1	
	AN960-10	WASHER	1	
	MS20364-1032	NUT	1	
-13	5607001-3	TAPE	1	
-14	5607014-4	SUPPORT (ATTACHING PARTS)	1	
-15	1601-0410	RIVET (V19738)	2	
-16	5607016-1	BEARING	3	
-17	5115-62MD	RETAINING RING (DIXIE BEARING)	3	
-18	5607014-1	SUPPORT (ATTACHING PARTS)	1	
-19	1601-0410	RIVET	2	
-20	607016-1	SHIM	AR	
	AN960-816L	WASHER	1	
-21	5607015-502	TRIM AND FLAP CONTROL ASSY (SEE FIGURE 27-8 FOR DETAIL BREAKDOWN.) (ATTACHING PARTS)	REF	
-22	1601-0410	RIVET	2	
-23	A10-230	RIVNUT (V03481)	1	
-24	NAS221-11	SCREW	1	
	AN960-10L	WASHER	1	

AA-5 SERIES
ILLUSTRATED PARTS CATALOG



Trim and Flap Control Installation
Figure 27-8

27G54-8-1

AA-5 SERIES
ILLUSTRATED PARTS CATALOG

Figure & Index No	Part Number	Nomenclature	Units Per Assy	Usable On Code		
					1	2
27- 8	5607015-502	TRIM AND FLAP CONTROL ASSY (SEE FIGURE 27-7 FOR NHA.)	1			
	5607018-501	BRACKET ASSY, MICROPHONE (ATTACHING PARTS)	1			
- 1	1601-0512	RIVET (V19738)	3			
- 2	A6K-75	RIVNUT (V03481)	3			
- 3	5607018-1	BRACKET	1			
- 4	5607017-501	CABLE ASSY (ATTACHING PARTS)	1			
- 5	AN526-1032R6	SCREW	1			
	MS21919DG3	CLAMP	1			
	AN960-10L	WASHER	1			
	MS20365-1032	NUT	1			
- 6	5604004-1	SPRING (ATTACHING PARTS)	1			
- 7	AN526-1032R14	SCREW	1			
- 8	AN960-10	WASHER	1			
- 9	GAES201-6	SPACER	1			
-10	A3235-028-24A	WASHER (V79533)	1			
-11	AN960-10L	WASHER	1			
-12	MS20364-1032	NUT	1			
-13	604066-1	HANDLE	1			
-14	N-1030C	TOGGLE BOOT (V97539)	1			
-15	6GM58-50X1Z3	SWITCH, FLAP (V73599)	1			
-16	5607015-1	FLEXIBLE CABLE (ATTACHING PARTS)	1			
-17	52-022-094-0500	ROLL PIN (ESNA)	1			
-18	AN960-416	WASHER	AR			
-19	AN960-416L	WASHER	AR			
-20	607016-2	WASHER	AR			
-21	607007-502	TRIM WHEEL ASSY (ATTACHING PARTS)	1			
-22	AN173-16	BOLT	1			
-23	3502-10-78	WASHER	1			
-23A	AN960-10L	WASHER	1			
-24	AN960-10L	WASHER	AR			
-25	AN310-3	NUT	1			
-26	MS24665-132	COTTER PIN	1			
-27	AN960-10	WASHER	1			
-28	607010-3	PINION (ATTACHING PARTS)	1			
-29	52-022-094-0500	ROLL PIN (ESNA)	1			
-30	607010-1	SHAFT	1			
-31	4L1-FF	NYLINER (THOMPSON)	2			
-32	607011-501	BRACKET ASSY, TRIM INDICATOR (ATTACHING PARTS)	1			
-33	AN23-8	BOLT	1			
-34	AN960-10L	WASHER	1			
-35	3502-10-18	WASHER (V31174)	1			
-36	AN310-3	NUT	1			
-37	MS24665-132	COTTER PIN	1			
-38	607009-502	BRACKET ASSY	1			
-39	607009-4	PLATE (ATTACHING PARTS FOR ITEM -38 AND -39)	1			
-40	1601-0410	RIVET (V19738)	5			

AA-5 SERIES
ILLUSTRATED PARTS CATALOG

Figure & Index No.	Part Number	Nomenclature							Units Per Assy	Usable On Code
		1	2	3	4	5	6	7		
27- 8 -41	5607019-1	.	BRACKET	1	
			(ATTACHING PARTS)							
-42	1601-0410	.	RIVET (V19738)	6	

-43	5607013-1	.	SUPPORT	1	
			(ATTACHING PARTS)							
-44	A8-75	.	RIVNUT	2	
-45	1601-0412	.	RIVET (V19738)	1	
-46	1601-0410	.	RIVET (V19738)	2	

-47	5607011-1	.	BULKHEAD	1	